

USPOREDBA I ISKUSTVA ODI VS. OWB



OD14 hrong
Rovinj, Hotel Eden - 13-17.10.2009.

DINKO BARKOVIĆ
ZVONIMIR HRKAČ

23.10.2009

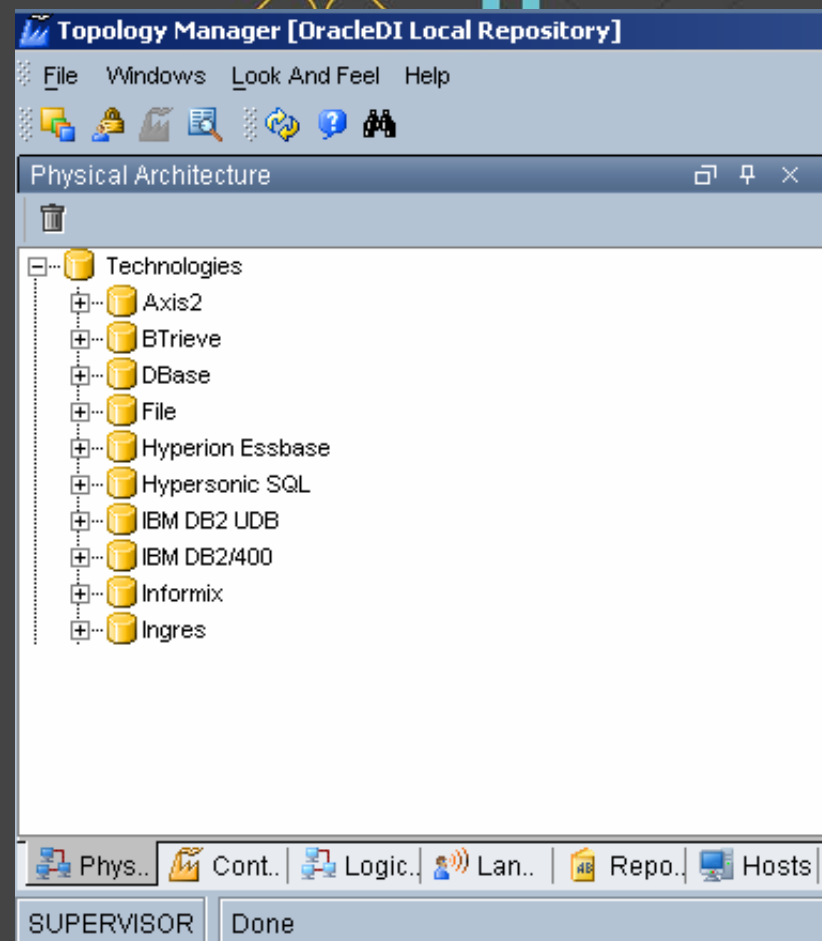
ODI - MODULI

- TOPOLOGY MANAGER
- DESIGNER
- OPERATOR
- SECURITY MANAGER

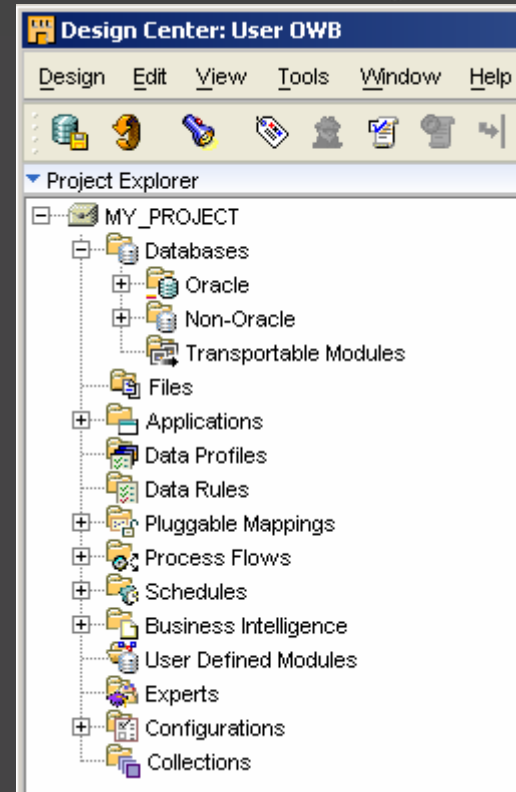
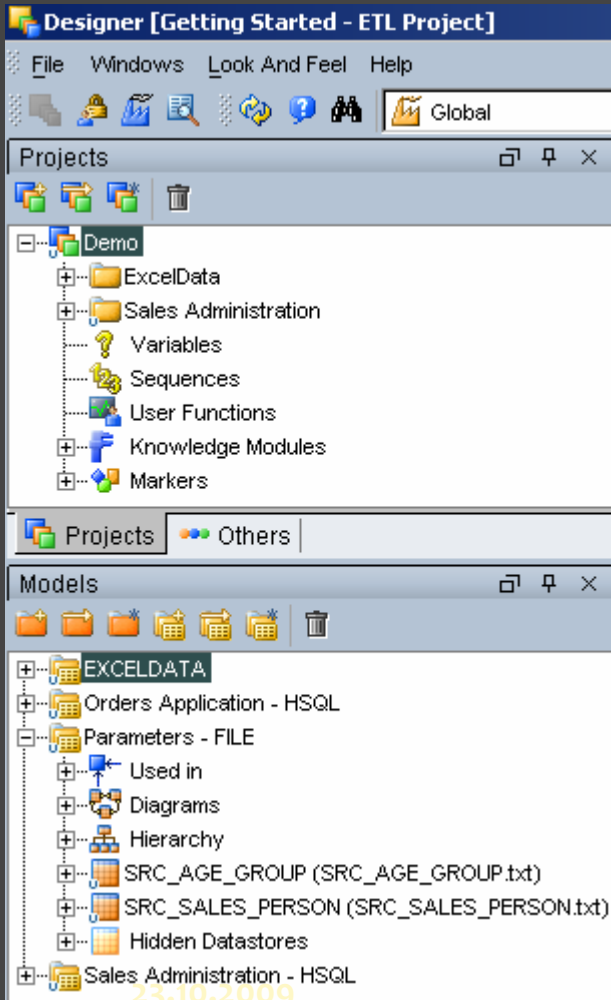


TOPOLOGY MANAGER

- DEFINIRANJE IZVORA
- KREIRANJE RADNOG REPOZITORIJA
- KREIRANJE KONTEKSTA



DESIGNER ODI / OWB



MODULI ZNANJA KNOWLEDGE MODULES

- **RKM** – ČITANJE STRUKTURE TABLICA I RUGIH OBJEKATA SA IZVORA
- **LKM** – EKTRAKCIJA PODATAKA S IZVORA, AKO JE PODRŽAN KORISTI SE BULK UNLOAD ALAT
- **CKM** – DETEKCIJA GREŠAKA IZVORNIH PODATAKA
- **IKM** - TRANSFORMACIJA PODATAKA IZ SA U TGT GENERIRANJEM OPTIMIZIRANOG NATIVE SQL-A ZA ZADANU BAZU PODATKA
- **JKM** – SNIMANJE NOVIH ILI IZMJENJENIH PODATAKA U TABLICU ILI VIEW
- **SKM** – MOGUĆNOST IZLOŽENOSTI PODATAKA KAO WEB SERVISA



OPERATOR

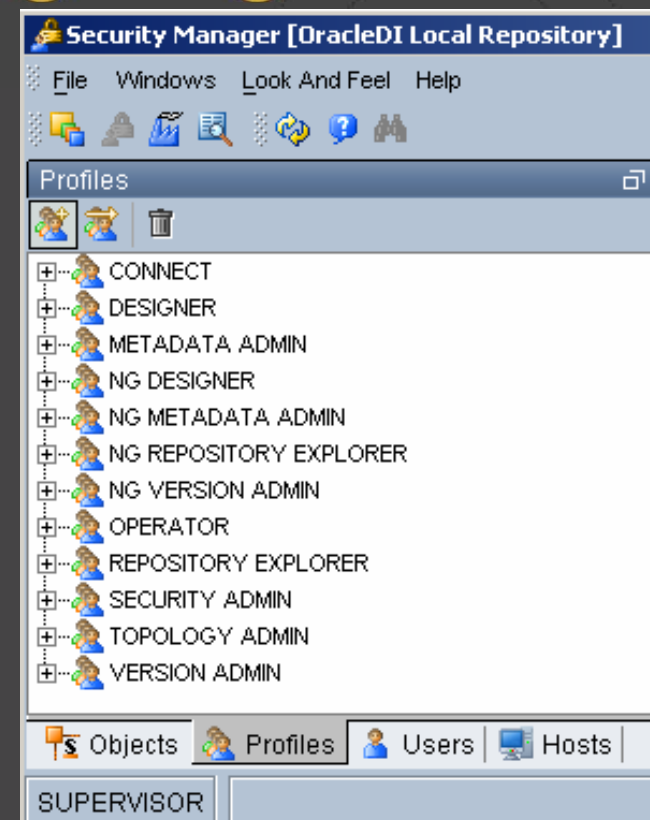
- PREGLED POKRETANJA JOBOVA
- PREGLED PLANIRANIH AKTIVNOSTI

The screenshot shows the 'Operator' application window titled 'Operator [Getting Started - ETL Project]'. The interface includes a toolbar with various icons and a 'Session List' pane. The main area displays a tree view of execution details for session '95005 - INT_TGT_EXCEL - 2009.09.18 16:29:29'. The tree structure is as follows:

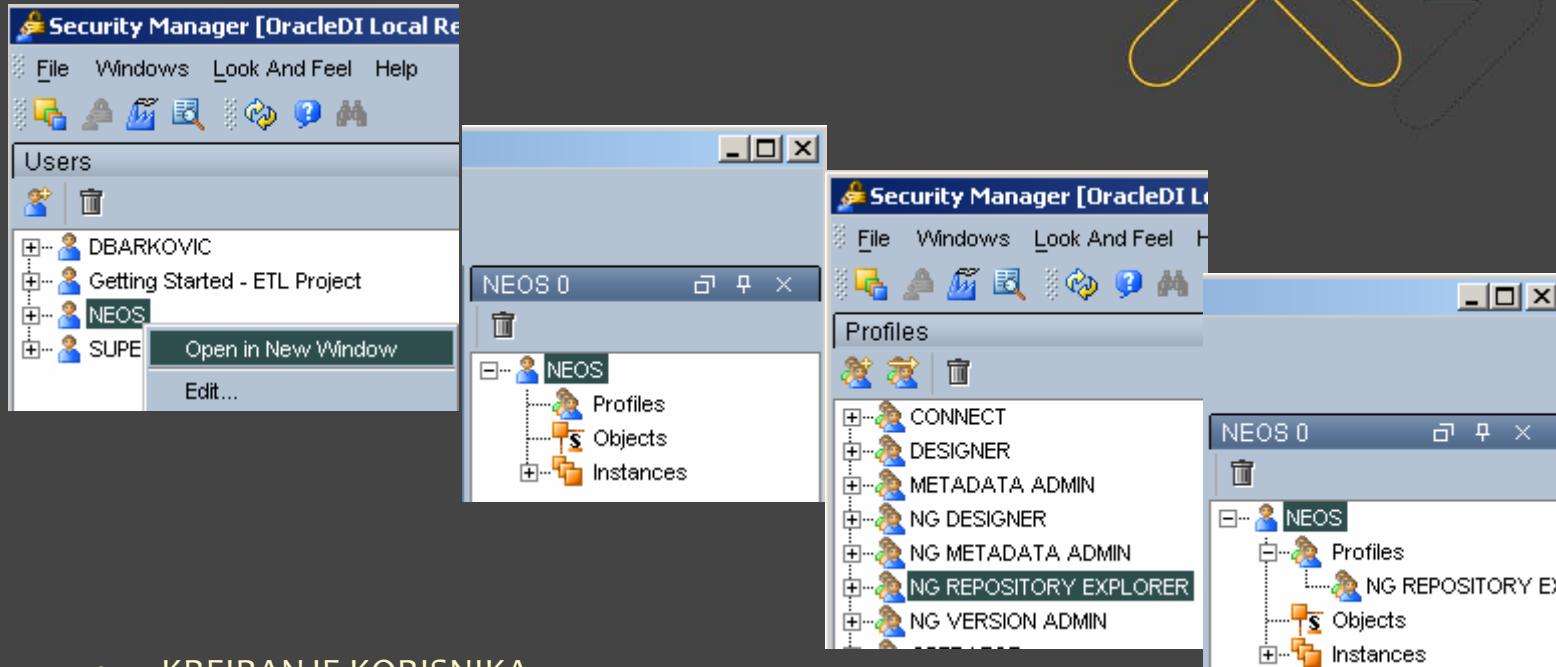
- Session List
 - Date
 - Physical Agent
 - Sessions
 - Status
 - Keywords
 - User
 - All Executions
 - 95005 - INT_TGT_EXCEL - 2009.09.18 16:29:29
 - Variables
 - 1 - INT_TGT_EXCEL - 2009.09.18 16:29:29
 - 1 - Loading - SS_0 - Drop work table
 - 2 - Loading - SS_0 - Create work table
 - 3 - Loading - SS_0 - Load data
 - 4 - Integration - INT_TGT_EXCEL - Drop flow table (!\$)
 - 5 - Integration - INT_TGT_EXCEL - Create flow table (!\$)
 - 6 - Integration - INT_TGT_EXCEL - Insert flow into !\$ table
 - 7 - Integration - INT_TGT_EXCEL - Analyze integration table
 - 8 - Integration - INT_TGT_EXCEL - Create index on flow table
 - 9 - Integration - INT_TGT_EXCEL - Flag rows for update
 - 10 - Integration - INT_TGT_EXCEL - Update existing rows
 - 11 - Integration - INT_TGT_EXCEL - Historize old rows
 - 12 - Integration - INT_TGT_EXCEL - Insert changing and new dimensions
 - 13 - Integration - INT_TGT_EXCEL - Commit transaction

SECURITY MANAGER

- KREIRANJE KORISNIKA U REPOZITORIJU, NE U BAZI PODATAKA
- DODJELJIVANJE PROFILA ILI POJEDINAČNIH PRAVA KORISNICIMA

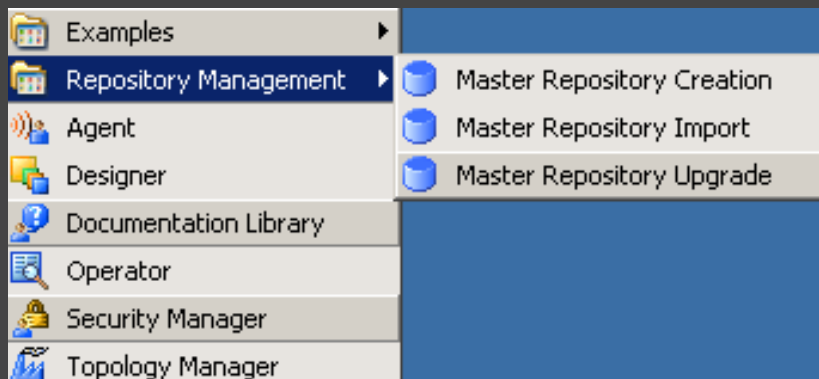


SECURITY MANAGER DODJELA PRAVA



- KREIRANJE KORISNIKA
- DRAG & DROP PROFILA ILI OBJEKTA

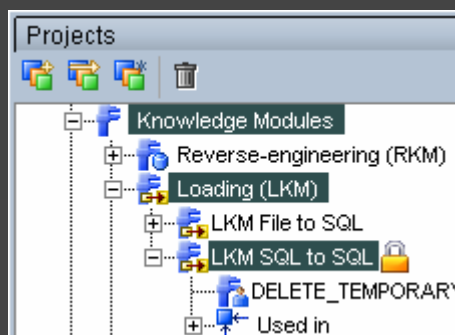
REPOZITORIJ INSTALACIJA



ODI – BILO KOJA TEHNOLOGIJA

OWB – SAMO ORACLE

LKM primjer



KM: LKM SQL to SQL

Markers Memo Vers

Definition

Or...	Command
1	Drop work table
11	Create work table
21	Lock journalized table
31	Load data
41	Cleanup journalized table
51	Drop work table

Command

```
drop table <%=snpRef.getTable("L", "COLL_NAME", "A")%>
```

Command

```
create table <%=snpRef.getTable("L", "COLL_NAME", "A")%>
(
    <%=snpRef.getColList("", "[CX_COL_NAME]t[DEST_WRI_DT]" +
snpRef.getInfo("DEST_DDL_NULL"), ",\nt", "", "")%>
)
```

Command

```
insert into <%=snpRef.getTable("L", "COLL_NAME", "A")%>
(
    <%=snpRef.getColList("", "[CX_COL_NAME]", ",\nt", "", "")%>
)
values
(
    <%=snpRef.getColList("", ":[CX_COL_NAME]", ",\nt", "", "")%>
)
```

- JYTHON
- PODJELJEN U KORAKE
- MOGUĆNOST IZBORA KORAKA

IZVOR PODATAKA PRIPREMA EXCEL DATOTEKE



The screenshot displays the Oracle ODI Topology Manager interface. The main window shows the 'Physical Architecture' tree with 'EXCELFILES' and 'EXCELFILES_Default' selected. Overlaid on this are several configuration windows:

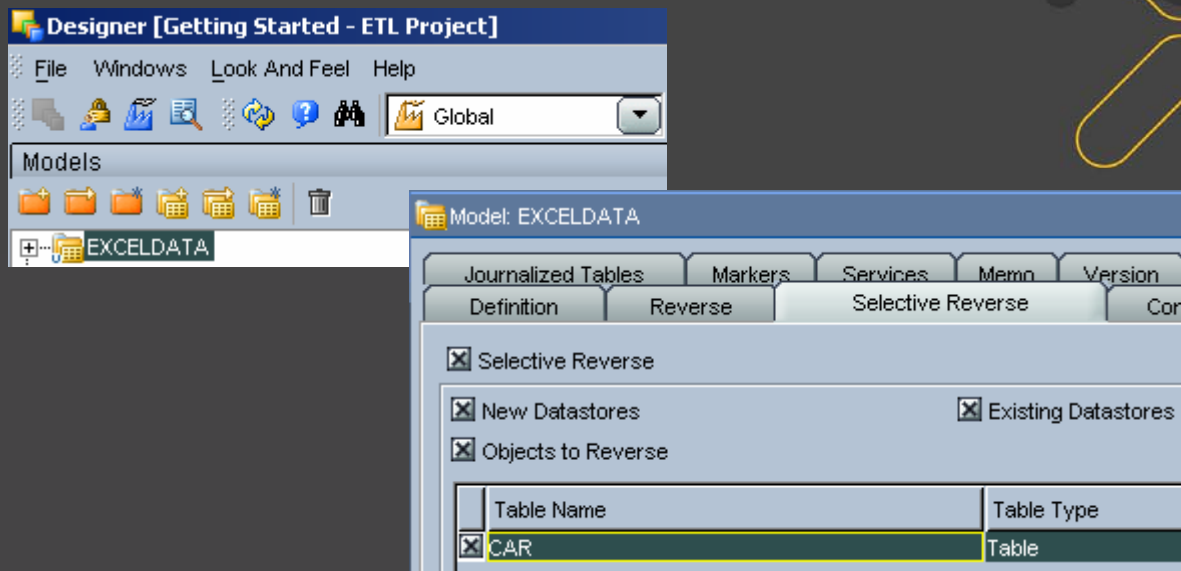
- Data Server: EXCELFILES** (Definition tab):
 - Name: EXCELFILES
 - Technology: Microsoft Excel
 - (Data Server)
- Data Server: EXCELFILES** (JDBC tab):
 - JDBC Driver: sun.jdbc.odbc.JdbcOdbcDriver
 - JDBC Url: jdbc:odbc:EXCELFILES
- Physical Schema: EXCELFILES_Default** (Definition tab):
 - Name: EXCELFILES_Default
 - Default
 - Work Tables Prefix:

Errors	Loading	Integration
E\$_	C\$_	I\$_
 - Journalizing elements prefixes:

Datatypes	Views	Triggers
J\$_	JV\$_	T\$_
 - Naming Rules:
 - Local Object Mask: %OBJECT
 - Remote Object Mask: %OBJECT

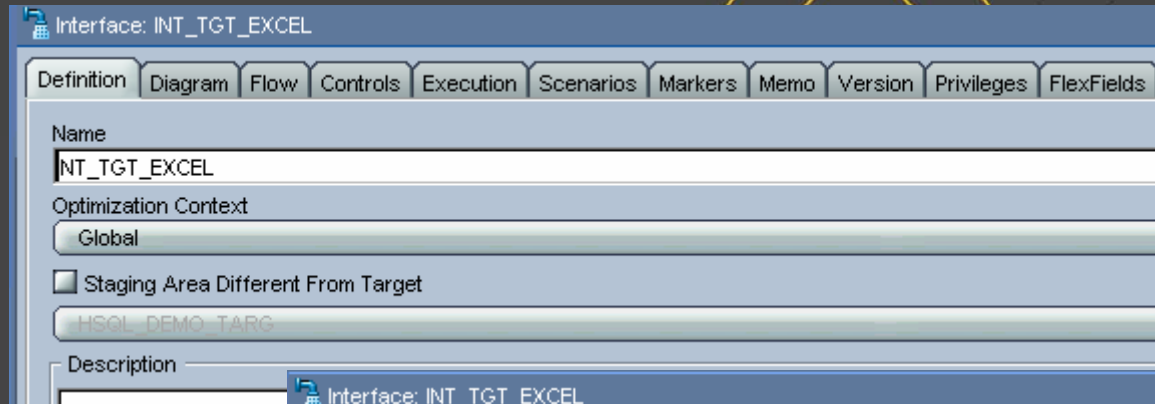
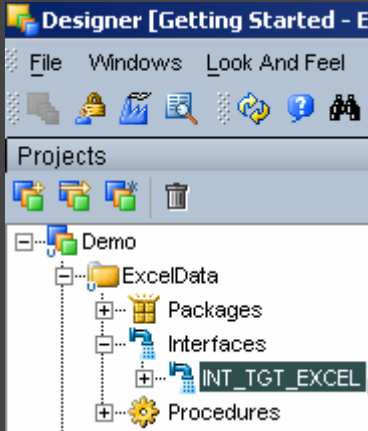
- ODI - TOPOLOGY MANAGER
- OWB - LOCATIONS

MODEL TABLICE

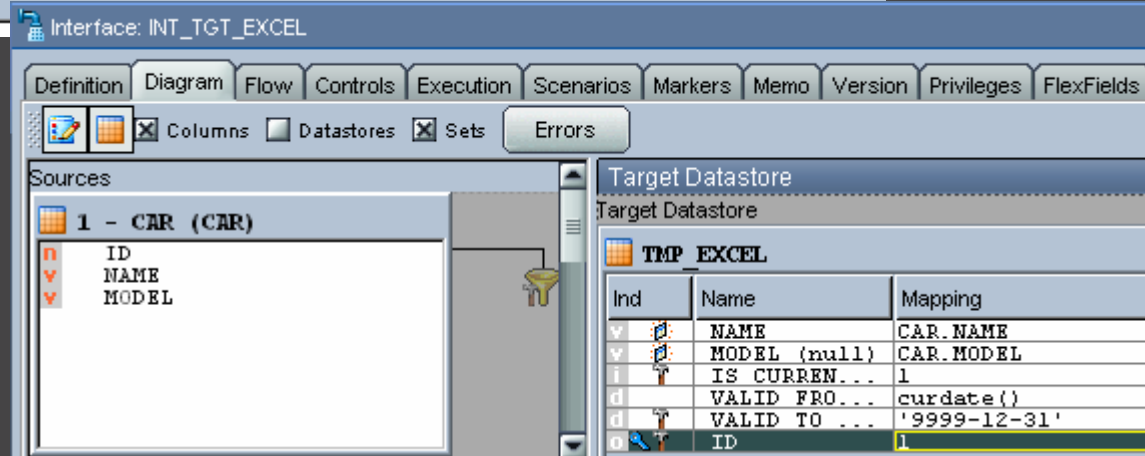


- ODI
 - omogućava reverse postojećih objekata
 - nije moguće kreirati tablicu u interface-u i spustiti u model / repozitorij
- OWB
 - omogućava reverse postojećih objekata
 - moguće je kreirati tablicu u mapiranju, a zatim ju spustiti u model / repozitorij

INTERFACE DIAGRAM



- ODI
 - interface
- OWB
 - mapping



INTERFACE FLOW

- DEFINIRANJE KM, IZVORA I ODREDIŠTA

Interface: INT_TGT_EXCEL

Definition Diagram Flow Controls Execution Scenarios Markers Memo Version Privileges FlexFields

SS_0 (-1 - EXCELFILES)

CAR

LKM SQL to SQL

Target+Staging Area (HSQ...)

SS_0

TMP_EXCEL

SS_0 (-1 - EXCELFILES)

Name SS_0

LKM Selection

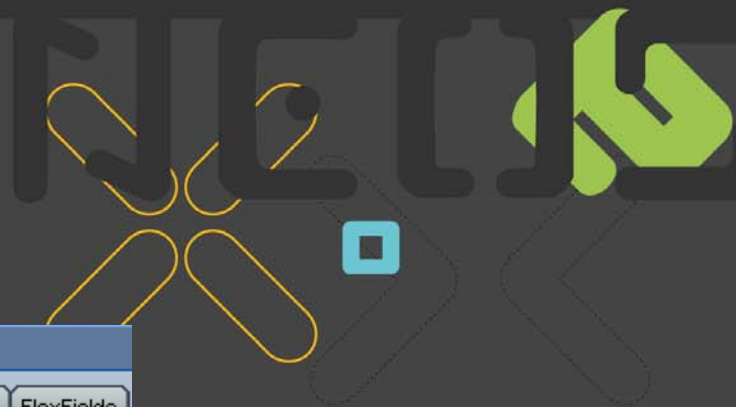
LKM LKM SQL to SQL

Option	Value
DELETE_TEMPORARY_OBJECTS	No

LKM Description

Author : Sunopsis
Version : 4.0
Last Update : DEC-

INTERFACE CONTROLS



Interface: INT_TGT_EXCEL

Definition Diagram Flow **Controls** Execution Scenarios Markers Memo Version Privileges FlexFields

Maximum number of errors allowed %

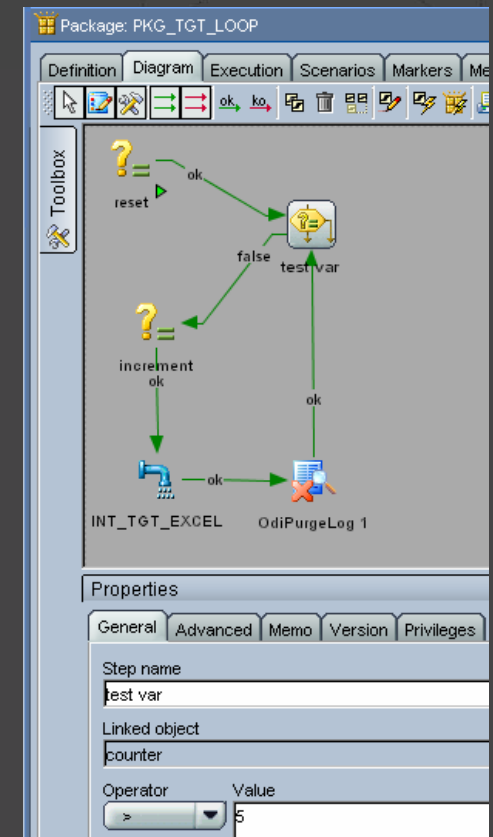
Select your KM

CKM HSQL

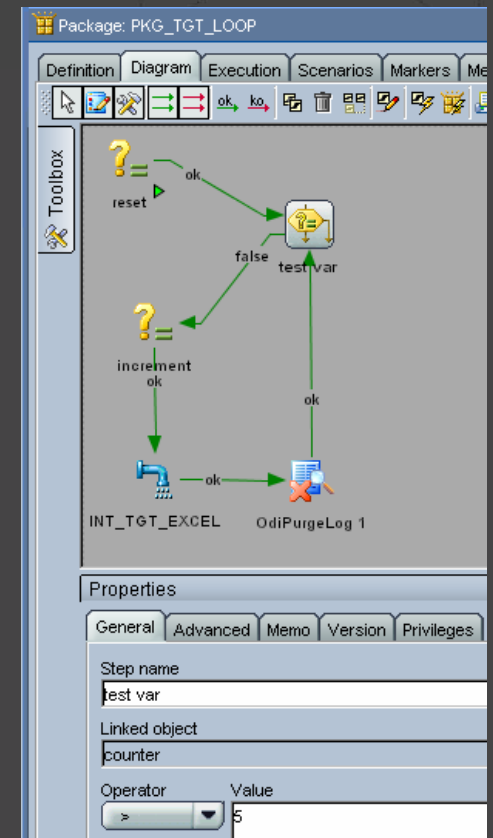
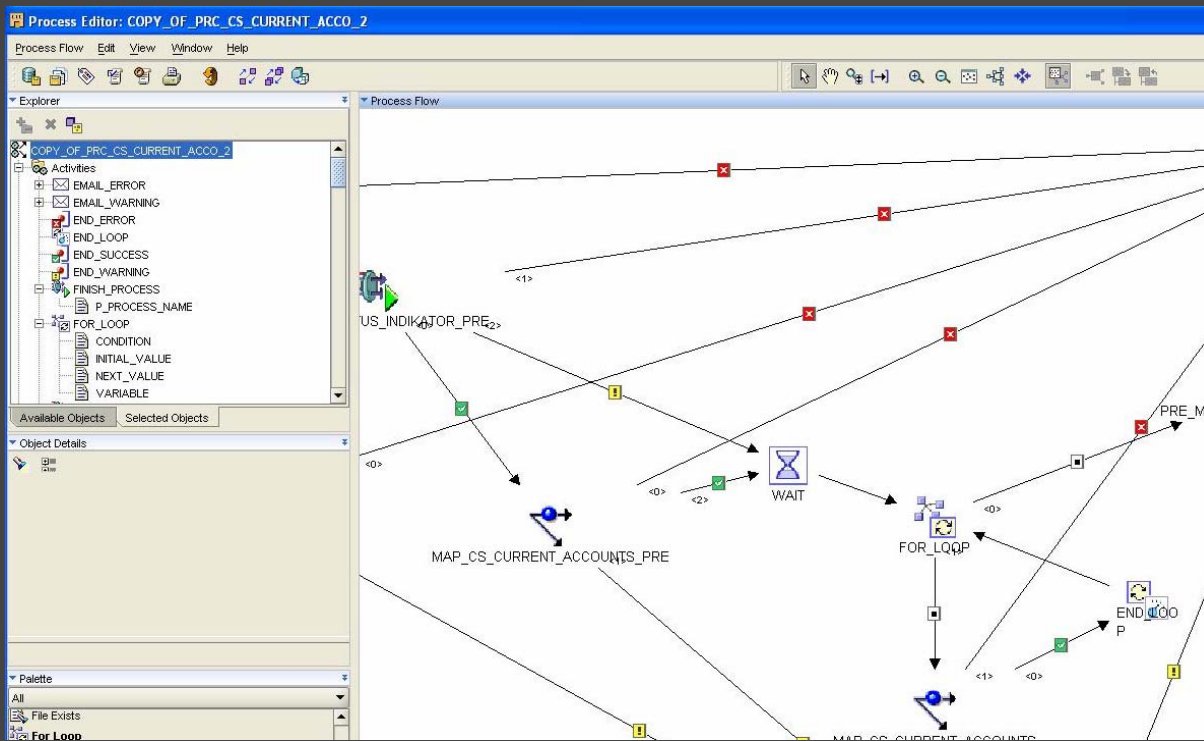
Option	Value
DROP_ERROR_TABLE	<Default>:No
DROP_CHECK_TABLE	<Default>:No

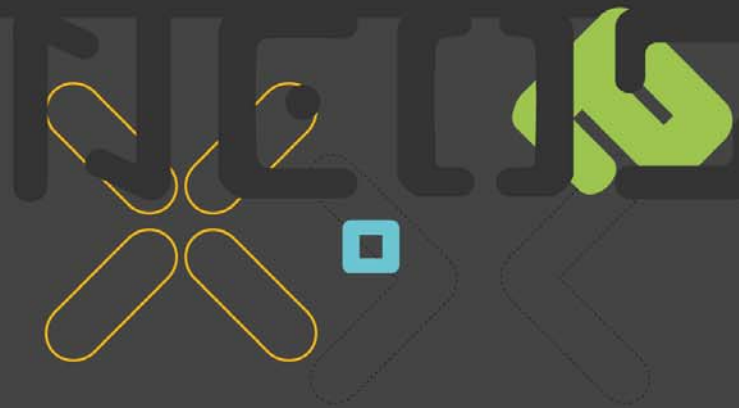
PACKAGES

- Objedinjuju interface objekte
- Poput OWB procesa



DEFINICIJA PETLJE ODI / OWB





Q&A