

Oracle Business Intelligence Products Roadmap

Ljiljana Perica, Oracle Business Solution Team Leader

Oracle is the Worldwide Leader in Business Analytics

**Oracle
BI Applications**

***#1 in Analytic Applications
- IDC***

**Oracle
BI Suite**

***“One of the most comprehensive and
innovative BI platforms...”
- Gartner***

**Oracle
Data Warehousing**

***#1 in DW Tools
- IDC***

Sources: IDC and Gartner

Oracle BI Product Suites

Range of BI suits for different needs

Oracle Business Intelligence SE-1

- ETL
- Oracle SE Database
- Access other DB & files
- BI Dashboards
- Enterprise Reporting
- Ad-hoc Reporting



*BI Pack for SMEs
50 Users Max*

Oracle Business Intelligence SE

- Ad-hoc Reporting & Analysis inc. interactive OLAP
- BI Dashboards
- Enterprise Reporting
- Desktop Integration
- BI Development



*Low cost
Solution Optimised
for Oracle database environments
& Power users*

Oracle Business Intelligence EE Plus

- Heterogeneous BI Server
- Ad-hoc Reporting & Analysis
- BI Dashboards
- Enterprise Reporting
- Desktop Integration
- BI Alerting
- Disconnected user BI
- Hyperion Products



*High-end Solution,
Optimised for heterogeneous
environments
& Enterprise Wide Deployments*

Oracle BI EE Plus - Centerpiece of BI Foundation

Advantages:

- ✓ Consolidated and standard-based
- ✓ Seamless user experience across products
- ✓ Unified metadata and shared services

Advantages:

- ✓ Delivers pervasive fact-based insight across multiple sources
- ✓ Scales to over 1 million users
- ✓ Hot-Pluggable, to work with any customer environment
- ✓ Integrated with EPM System and Oracle Apps
- ✓ Adopted by all Apps Unlimited, GBU, and Fusion product families

Interactive Dashboards



Ad hoc Analysis



Proactive Detection and Alerts



Microsoft Office



Reporting & Publishing

BI Publisher

Financial Reporting

Interactive Reporting

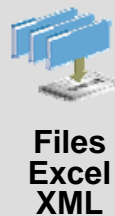
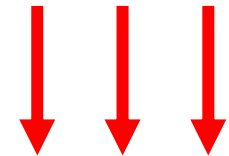
SQR Production Reporting

Web Analysis



Common Enterprise Information Model

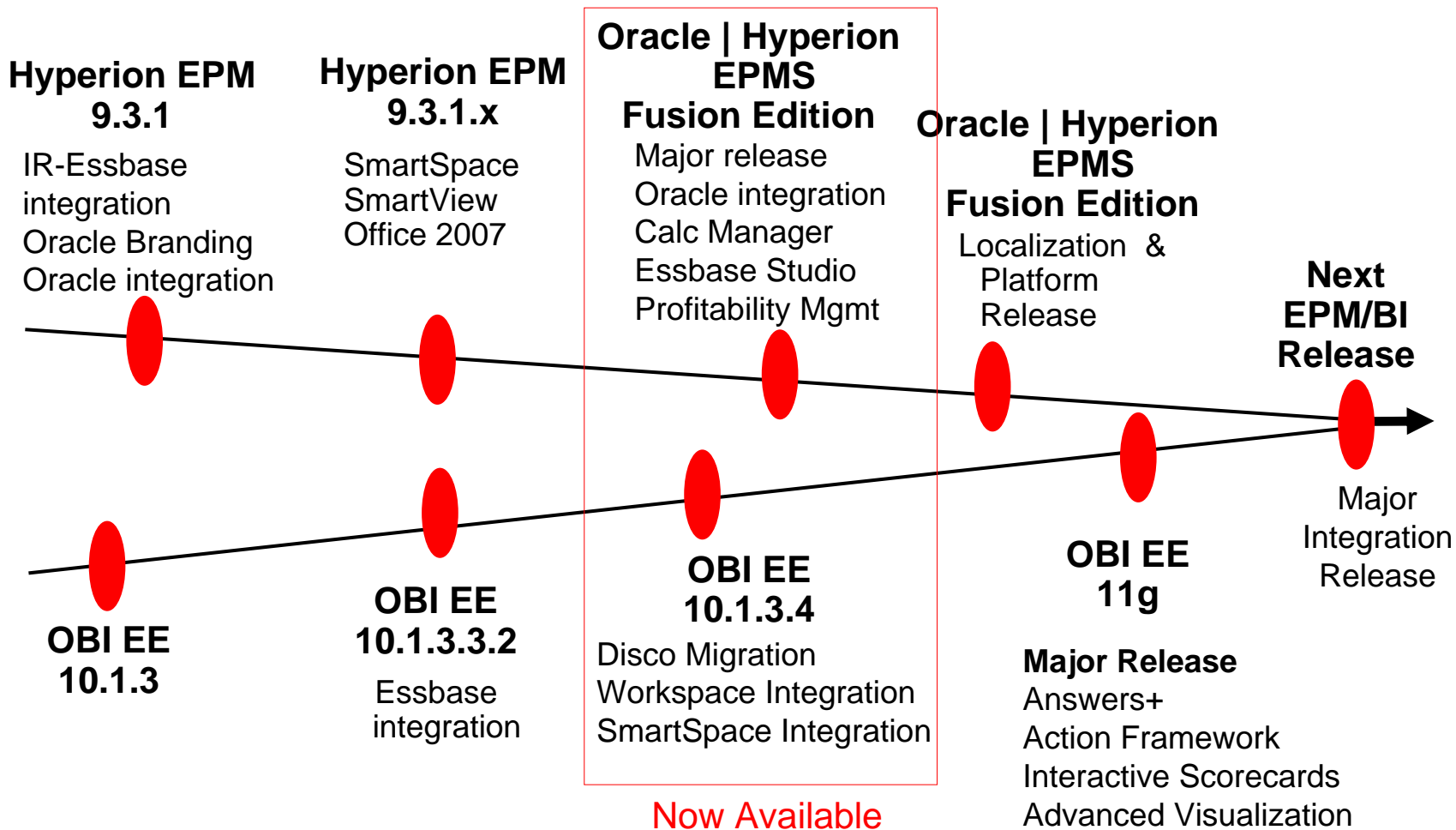
Oracle BI Server



Roadmap Drivers

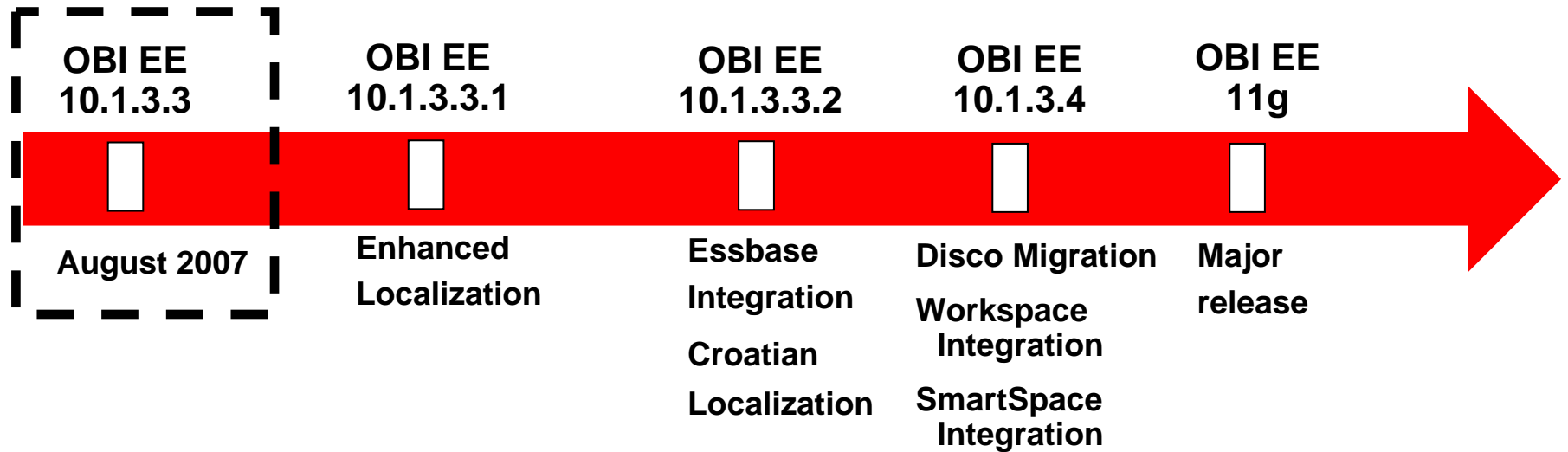
- Provide industry's first integrated EPM System
- Enable **pervasive** information access
- **Innovate** in all areas
- Remain **standards-based** and **Hot Pluggable**
- Evolve to **unified** BI Foundation
- **Protect, extend, evolve** customers' existing investments

OBI + Hyperion Integration Releases



Oracle BI EE Plus Releases

Align, Integrate, Evolve



OBIEE 10.1.3.3

Product Update

- **Extended Office Add-ins**
 - Pervasive Office Integration
- **Dashboards and Reports**
 - Multi-select Search
 - Metadata Dictionary Integration
 - BI Publisher Flex/Flash Templates
 - BI Publisher – Discoverer Integration
- **Metadata Administration**
 - XMLA Driven Business Models
 - Pass through DB Functions
- **Data Source Integration**
 - Neteeza Certification

OBIEE 10.1.3.3 – Office Enhancements

Build Your Own Dashboards

The screenshot shows an Excel spreadsheet with the following data:

Region	Products	Dollars	Units
EASTERN REGION	- BOSTON DISTRICT		
	- BOSTON		
	Enterprise	\$221,411	80,285
	Magicolor	\$184,002	45,208
	McCloskey	\$493,581	169,204
	Valspar	\$95,396	24,307
+ HARTFORD/NEW HAVEN			
+ NEW YORK DISTRICT			
+ NEW YORK			
+ PHILADELPHIA DISTRICT			
+ YOUNGSTOWN DISTRICT			
50			
Region	WESTERN REGION		
Markets	Products	Dollars	Units
- DENVER DISTRICT			
+ DENVER			
- SALT LAKE CITY/BOISE			
	Enterprise	\$7,685	1,586
	Magicolor	\$1,428	507
	McCloskey	\$9,704	4,654

Insert BI views as native Office charts, refreshable images or Flash objects

Select from all available views

Combine BI data with Office formatting

OBI EE 10.1.3.3 - Link to Answers

Single-click Access to Complete BI Functionality

Oracle BI Task Pane

Presentation Catalog

Presentation Catalog:

- Report Prompts
- Sales Summaries
- Brand Analysis
 - Color Ranking by Units Sold**
 - flatDataView
 - Chart
- staticchart!1
- staticchart!2
- staticchart!3
- staticchart!4
- Sales by Brand for Currer
- Sales Summary for Currer
- Regional Analysis
- Year over Year Analysis
- Sample Analyses
- Standard Reports

Item Details

Presentation catalog in Office

ORACLE Answers

Criteria Results Prompts Advanced

Compound Layout

Color Ranking by Units Sold

Time run: 3:20:2007 3:54:00 PM

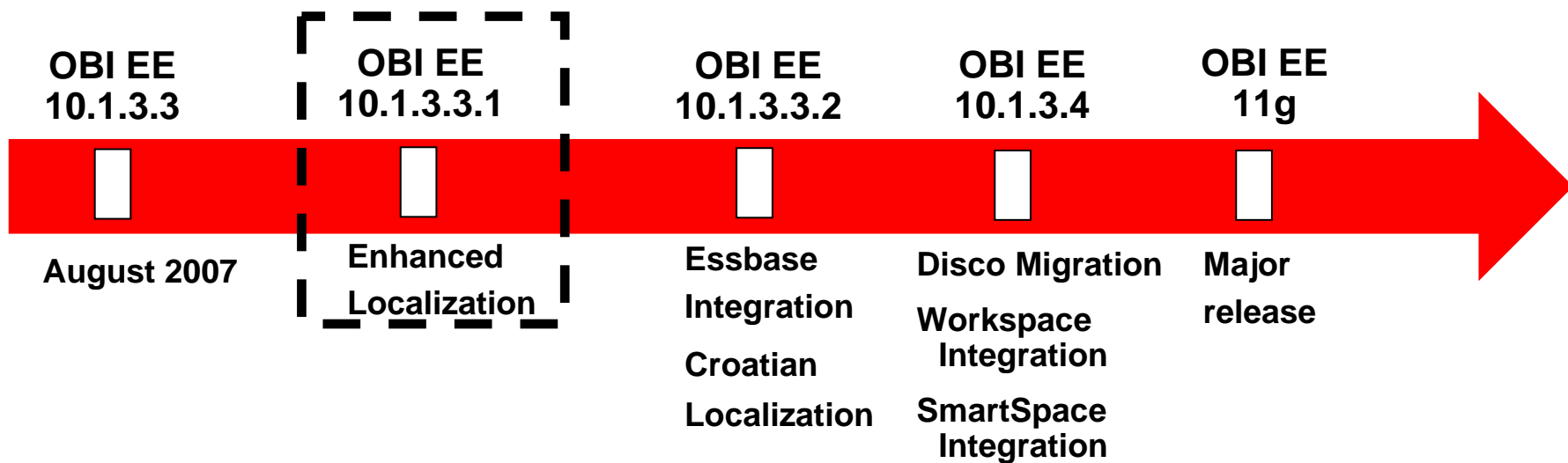
Filters: Year is equal to 2002

Products	Rank	Sales Measures	Units
White	1	53,187	
Violet	2	48,587	
Antique Doll	3	19,880	
Stone	6	18,859	
Popcorn	7	14,897	
Brierwood	8	9,829	
Oxford Brown	9	7,851	
Cloud White	10	6,475	
Cobblestone	11	6,274	
Gray	12	5,583	
Colonial Blue	13	5,434	
Armory	14	5,368	
Light Gray	15	5,207	
Flint	16	4,888	
Embers	17	4,880	
Tile Red	18	3,788	
Carriage House Red	19	3,807	
Hunter Green	20	3,553	
Midnight Black	21	3,520	
True Blue	22	3,372	
Burgundy	23	3,036	
Gossamer	24	2,888	
Steel	25	2,785	

Oracle Answers Compound Layout

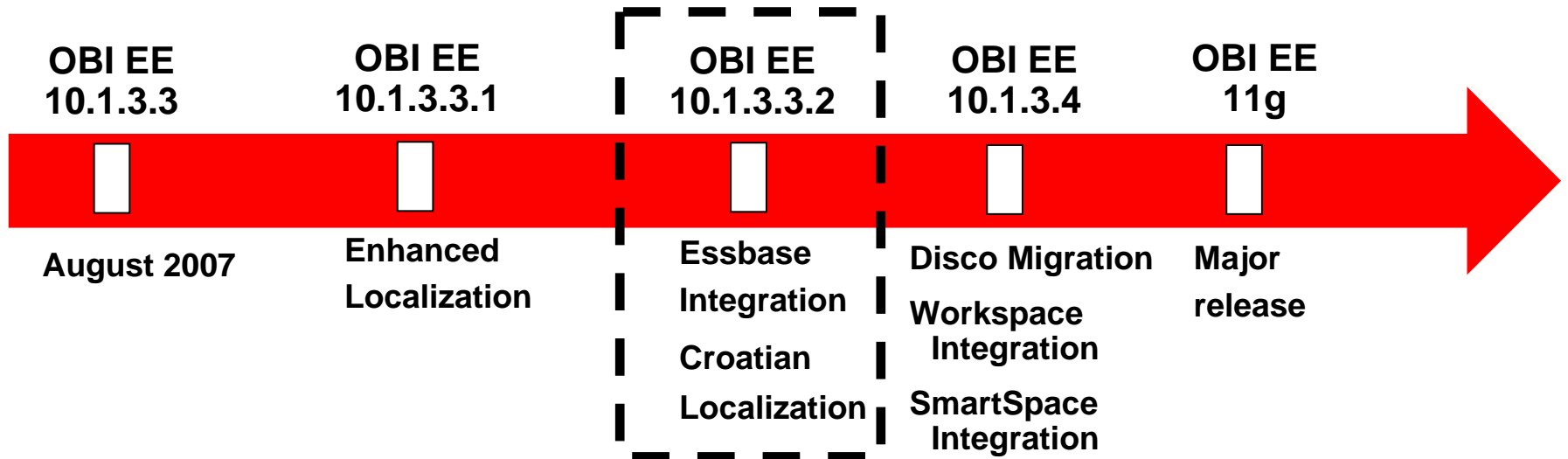
Oracle BI EE Plus Releases

Align, Integrate, Evolve



Oracle BI EE Plus Releases

Align, Integrate, Evolve

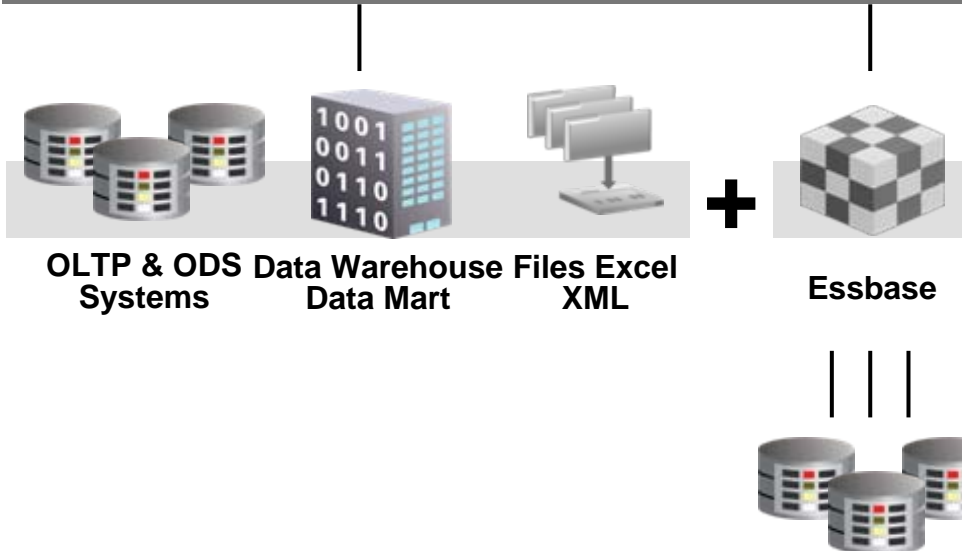


Essbase as source to OBIEE

Available now in OBIEE 10.1.3.3.2



Common Enterprise Information Model BI Server



For OBI Customer

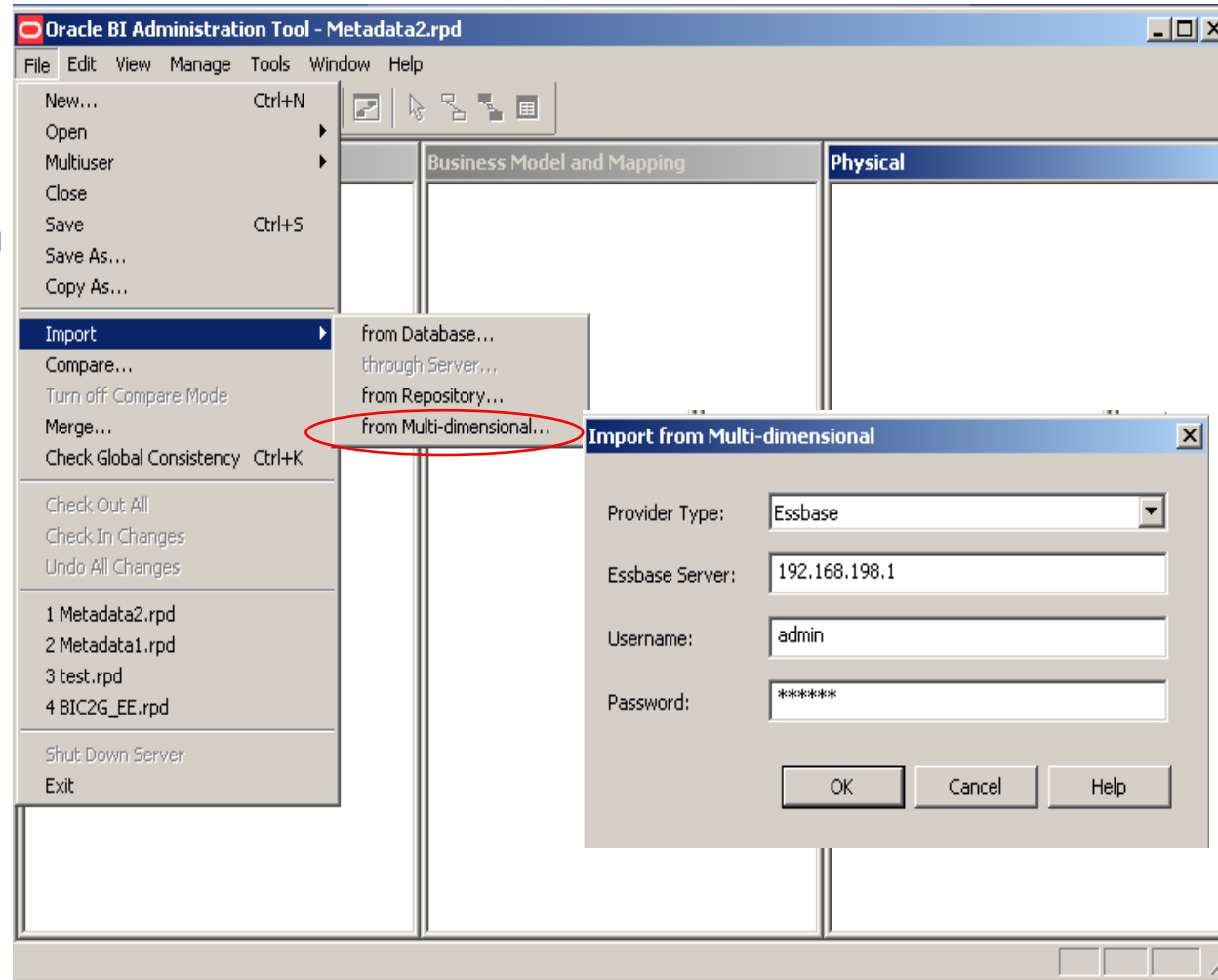
- Access all data managed by Essbase
- Essbase data can participate in Common Enterprise Information Model

For Essbase Customer

- Essbase data and calculations made available to OBIEE users

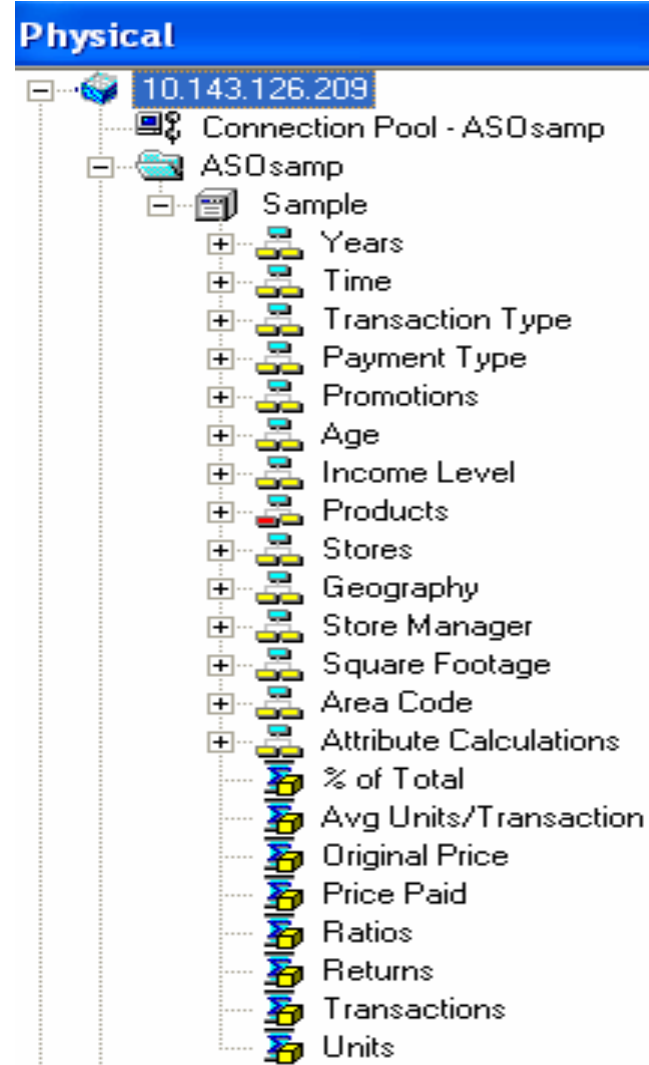
BI Server Admin Tool – Essbase Import

- New Admin tool import dialog for multi-dimensional sources in 10.1.3.3.2
- Essbase metadata import (and queries) require installation of Essbase client API on BI Server



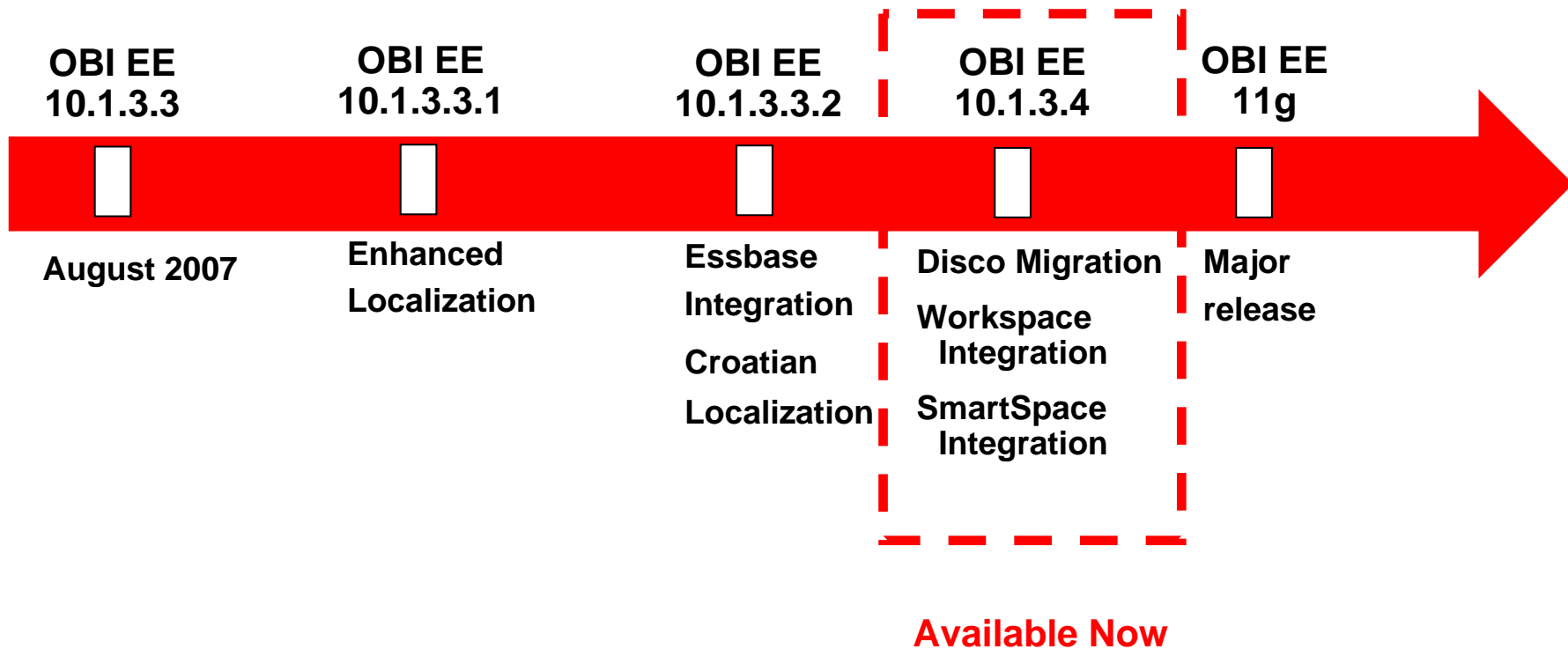
BI Server Metadata for Essbase

- Multidimensional sources are uniquely modeled in the BI Server metadata
- For Essbase, in the physical repository layer:
 - Physical database corresponds to an Essbase Server instance
 - Physical display folder corresponds to an Essbase Application
 - Physical cube corresponds to an Essbase cube
- A Business Model is created simply by dragging and dropping a cube onto the Business Model layer.
 - Metadata is implied by the cube structure



Oracle BI EE Plus Releases

Align, Integrate, Evolve



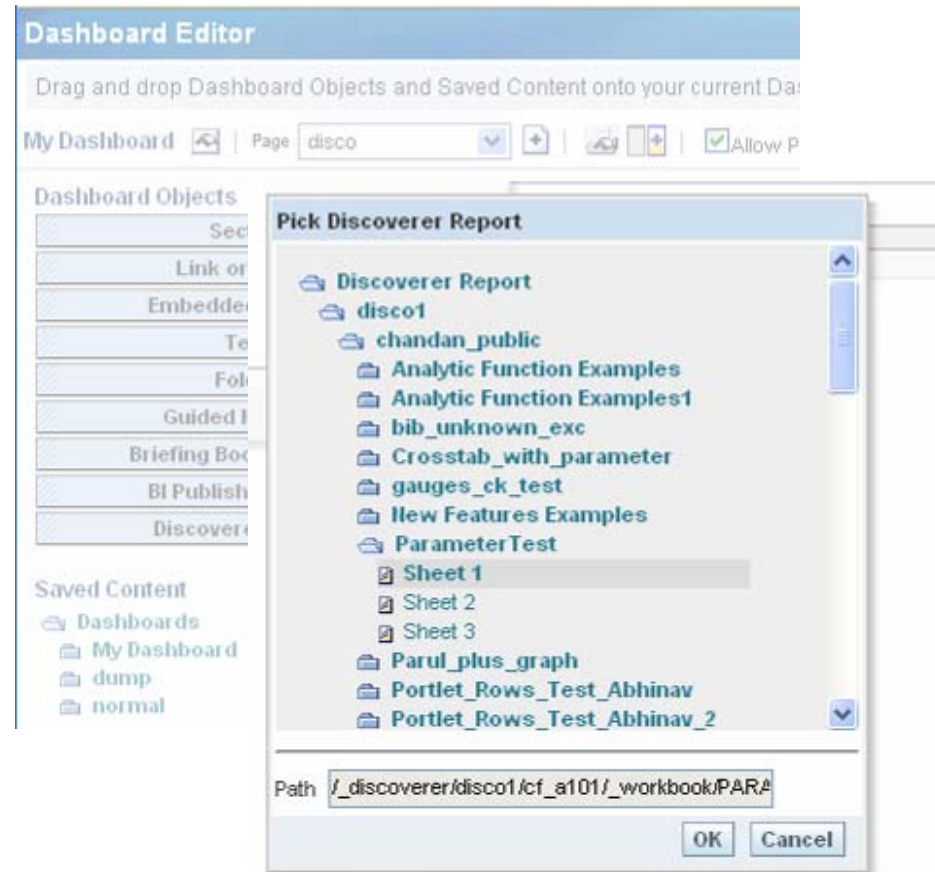
Discoverer – Protect, Interoperate, Migrate

Discoverer BI EE migration utility in 10.1.3.4

- Protect
 - Lifetime Support

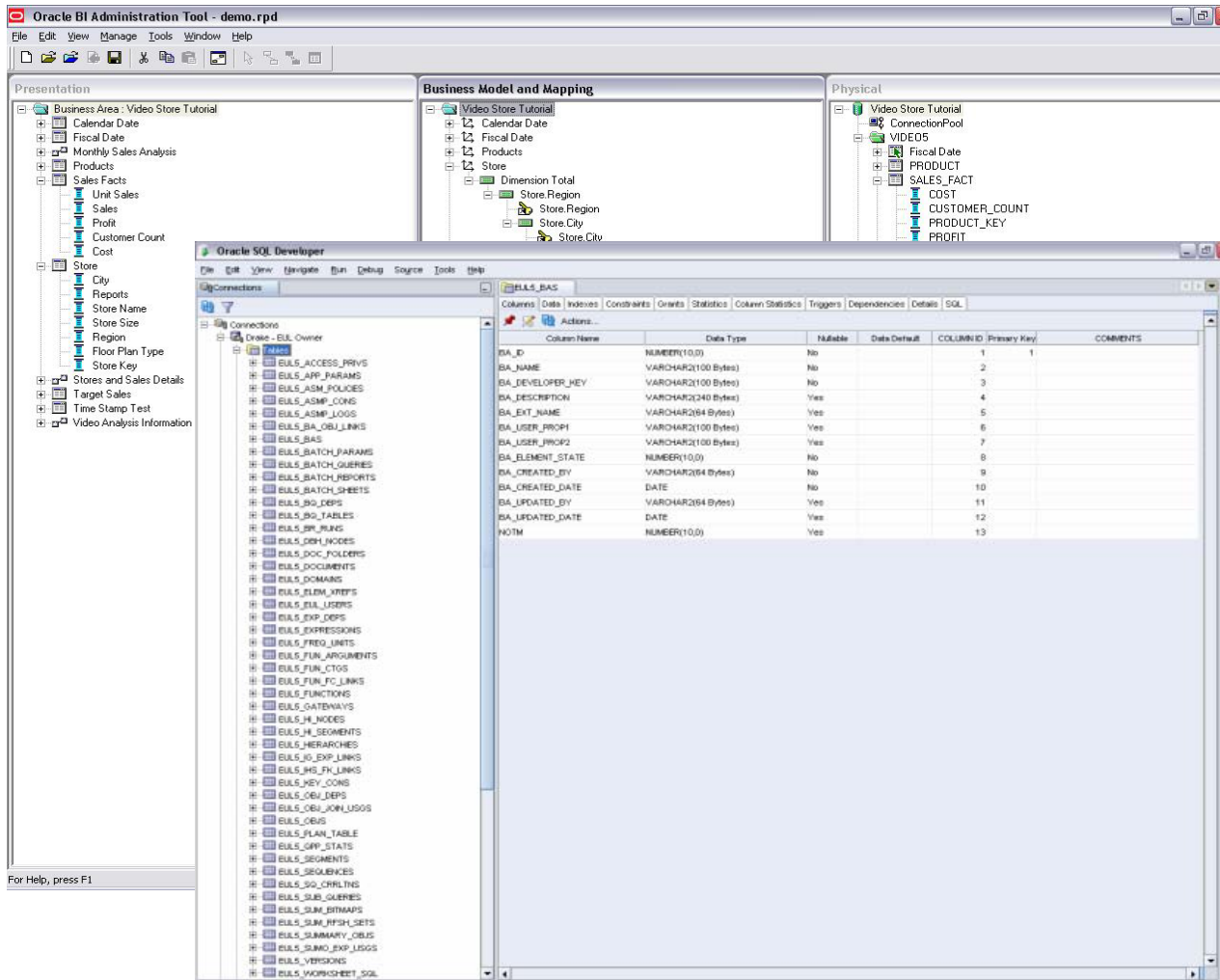
- Interoperate
 - BI Publisher integration Today
 - BI Dashboards and Delivers Integration in 11g

- Migrate
 - EUL Migration Utility 10.1.3.4



Oracle Discoverer Migration Utility

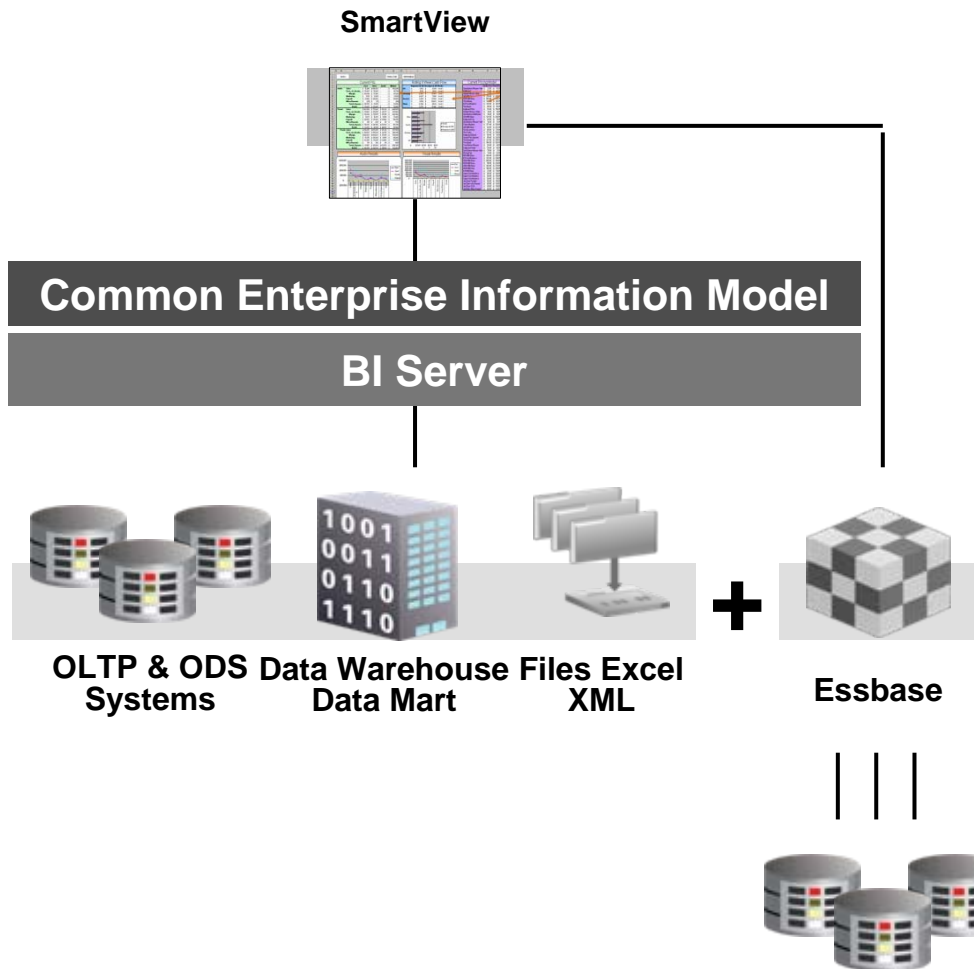
Migrate Discoverer metadata to BI EE



- QuickStart RPD Generation from EUL
- Targeted for regular star/snowflakes
- Supported with methodology and best practices

SmartView for Essbase and OBIEE

Available with EPMS Fusion edition

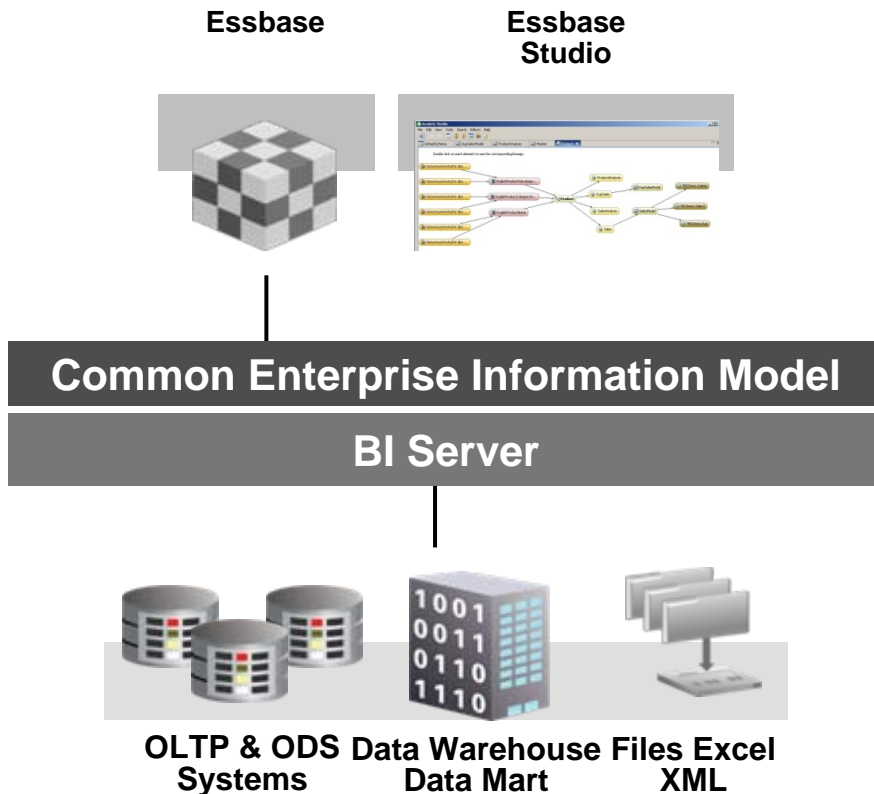


For SmartView User

- Natively access Essbase and OBIEE data in single UI

OBIEE as Source to Essbase

Available now (Essbase Studio in EPMS Fusion Edition)



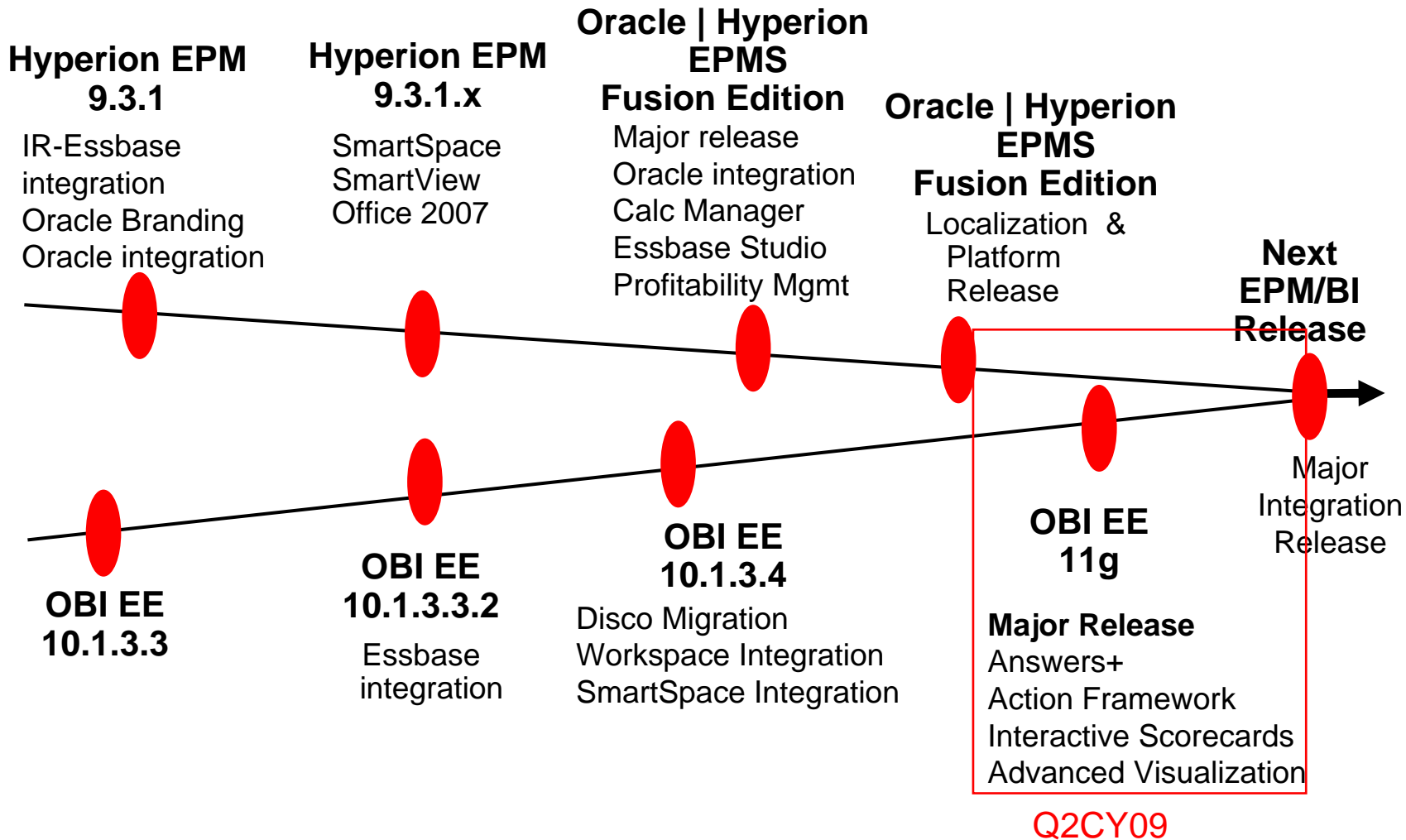
For Essbase Customer

- Essbase can access all sources mapped into Common Enterprise Information Model
- Essbase drill through to the OBIEE-mapped data
- Essbase Studio can map OBIEE data for Essbase use
- Essbase can use OBI Apps as a data source

For OBI Customer

- Essbase what-if can be applied to OBIEE-mapped data

OBI + Hyperion Integration Releases



Create...

-  **Dashboard**
Description of Object goes here. More text is here.
-  **iBot**
Description of Object goes here. More text is here.
-  **Report**
Description of Object goes here. More text is here.
-  **Request**
Description of Object goes here. More text is here.
-  **Score Card**
Description of Object goes here. More text is here.

[Create More](#) [dropdown]

Browse/Search Catalog...

-  My Folders
-  Shared Folders
-  My Reports
-  Shared Reports
-  iBots Acting on My Behalf
-  My Requests
-  My Dashboards
-  My Reports
-  My Score Cards

[Browse All Folders...](#) | [Search...](#)

Get Started...

-  [Quick Tour](#)
-  [Oracle Technology Network](#)
-  [Help Documentation](#)

 Recent Dashboards



My Dashboard
[View](#) | [Edit](#) | [More](#) [dropdown]



Regional Performance
[View](#) | [Edit](#) | [More](#) [dropdown]



Enterprise Contact Center
[View](#) | [Edit](#) | [More](#) [dropdown]

[More Dashboards](#) [dropdown]

 Recent Updates



Marketing Dashboard
[View](#) | [Edit](#) | [More](#) [dropdown]



Regional Profit
[View](#) | [Edit](#) | [More](#) [dropdown]



Invoice Template
[View](#) | [Edit](#) | [More](#) [dropdown]



Regional Performance
[View](#) | [Edit](#) | [More](#) [dropdown]



Sales Dashboard
[View](#) | [Edit](#) | [More](#) [dropdown]

 Favorites



2006 Sales and Profits Report
[View](#) | [Edit](#) | [More](#) [dropdown]



Audio & Video Sales Report
[View](#) | [Edit](#) | [More](#) [dropdown]



Marketing Dashboard
[View](#) | [Edit](#) | [More](#) [dropdown]



Employee Salary Report
[View](#) | [Edit](#) | [More](#) [dropdown]



Regional Report
[View](#) | [Edit](#) | [More](#) [dropdown]



Regional Performance
[View](#) | [Edit](#) | [More](#) [dropdown]

OBI EE Personalized Start Page

More "Task" Oriented design. Personalization, where you've been.

Answers Plus in OBIEE 11g

Criteria Results Prompts Advanced

Supplier Sales

List ALL

- Measures
 - Costs
 - Promotion
 - Quota
 - Sales
 - Units
- Channel
- Geography
 - Continent
 - Region
 - Country
 - State
 - City
 - Geography - Consolidated
 - Geography - Standard
 - World
 - Africa
 - Americas
 - Asia
 - Australia
 - Europe
- Product
 - Division
 - Type
 - Product - Standard
- Time
 - Year
 - Quarter

Catalog

Views

- Pivot Table
- Chart
- Table
- Title

Pivot Table

View

2001

	All Products		Accessory Division		Audio Division		Video Division	
	Costs	Sales	Costs	Sales	Costs	Sales	Costs	Sales
World	1,500	3,060	500	1020	500	1020	500	1020
Africa	300	600	100	200	100	200	100	200
Americas	300	660	100	155	100	285	100	220
Brazil	30	90	10	10	10	50	10	30
Canada	30	120	10	20	10	60	10	40
USA	150	300	50	100	50	100	50	100
Asia	300	600	100	200	100	200	100	200
Australia	300	600	100	200	100	200	100	200
Europe	300	600	100	200	100	200	100	200

Selections

List ALL

Measures

- Cost
- Sales

Geography - Standard

- Start with: Everything
- Keep Country: 'Sales > 30'
- Remove: 'Argentina', 'Mexico'
- New...

Product - Standard

- Start with: Everything
- New...

Year

- Start with: Everything
- New...

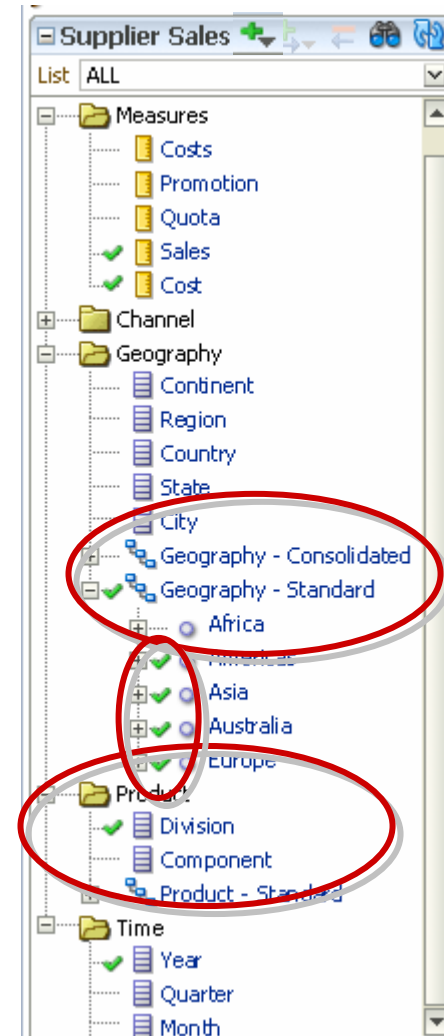
- The Next Generation of Answers
- Multidimensional, OLAP Analysis
- OLAP-style query building with member selection
- Calculated Members
- Ragged and skip-level hierarchies
- Hierarchical Calculations
- Function extensibility
- Custom Aggregates
- Uniformly applies to dimensional (OLAP) and relational sources
- Optimized for Essbase

Answers+ Key Features

- Hierarchy / Member Browsing
- Dimensional Columns in Pivot Tables
- Outline Total Drilling
- Member Selection (Query Steps)
- Calculated Items
- Custom Groups
- Modular Workspace

Hierarchy/Member Browsing

- Hierarchies defined in metadata exposed in presentation layer and thus, in Subject Areas
- Multiple hierarchies available per dimension
- Requests can contain both columnar and hierarchical data
- Indication of which measures and members are included in the request



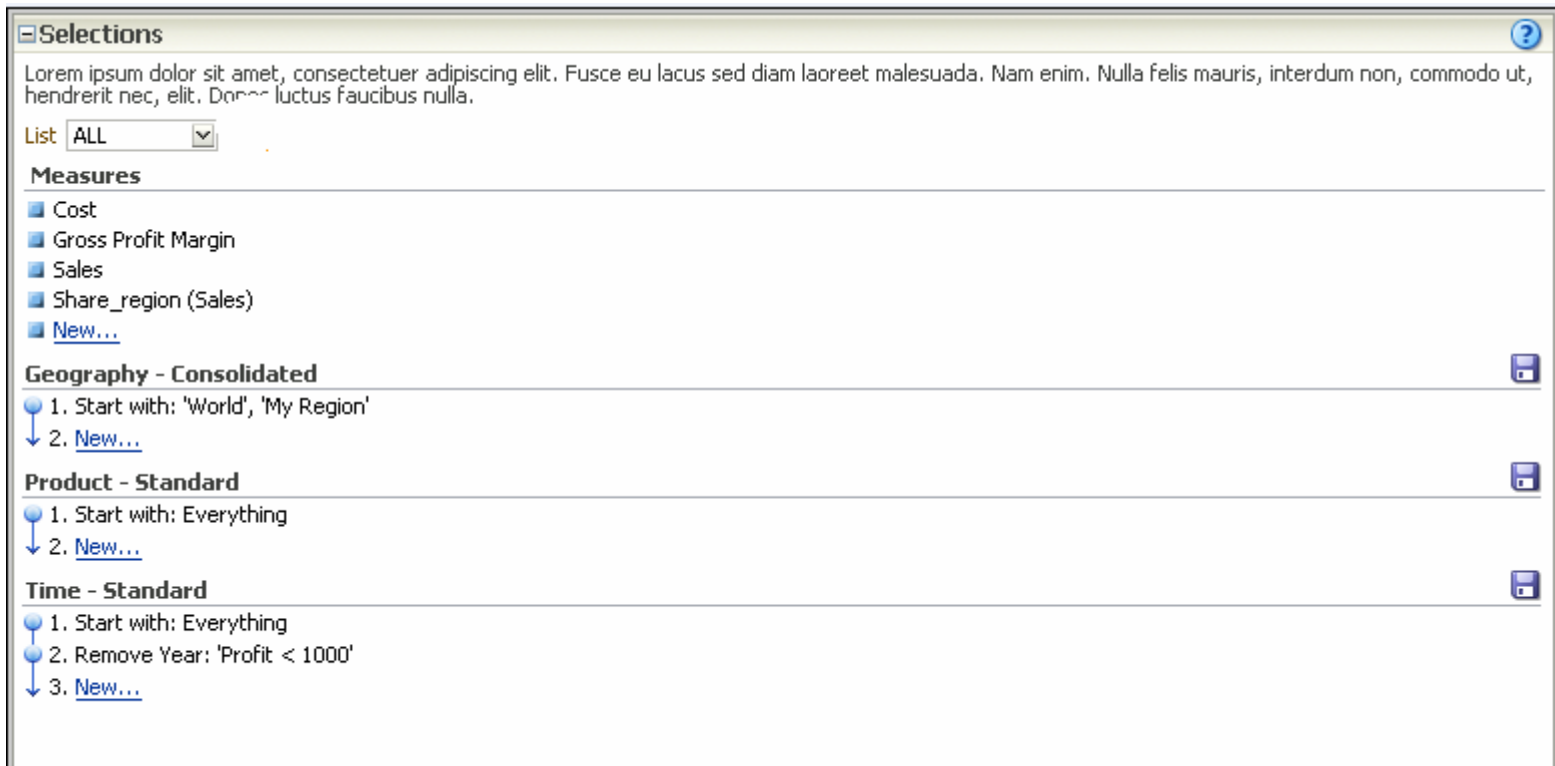
Dimensional Columns

- New column type with unique capabilities
- Achieved by dragging and dropping hierarchy from Subject Area tree on to workspace
- Single column with expansion capabilities
- Asymmetrical Drilling
- “Drill Up”

Pivot Table									
2001									
All Products		Accessory Division		Audio Division		Video Division			
	Costs	Sales	Costs	Sales	Costs	Sales	Costs	Sales	
World	1,200	2,460	400	820	400	820	400	820	
Americas	300	660	100	155	100	285	100	220	
Argentina	30	60	10	10	10	30	10	20	
Brazil	30	90	10	10	10	50	10	30	
Canada	30	120	10	20	10	60	10	40	
Colombia	30	30	10	5	10	15	10	10	
Mexico	30	60	10	10	10	30	10	20	
USA	150	300	50	100	50	100	50	100	
Asia	300	600	100	200	100	200	100	200	
Australia	300	600	100	200	100	200	100	200	

Member Selection

- Similar to Discoverer for OLAP Query Steps
- Allows specific selection of members for display on the request
- Does not impact Total member value



Selections

Lorem ipsum dolor sit amet, consectetur adipiscing elit. Fusce eu lacus sed diam laoreet malesuada. Nam enim. Nulla felis mauris, interdum non, commodo ut, hendrerit nec, elit. Donec luctus faucibus nulla.

List **ALL**

Measures

- Cost
- Gross Profit Margin
- Sales
- Share_region (Sales)
- [New...](#)

Geography - Consolidated

- Start with: 'World', 'My Region'
- [New...](#)

Product - Standard

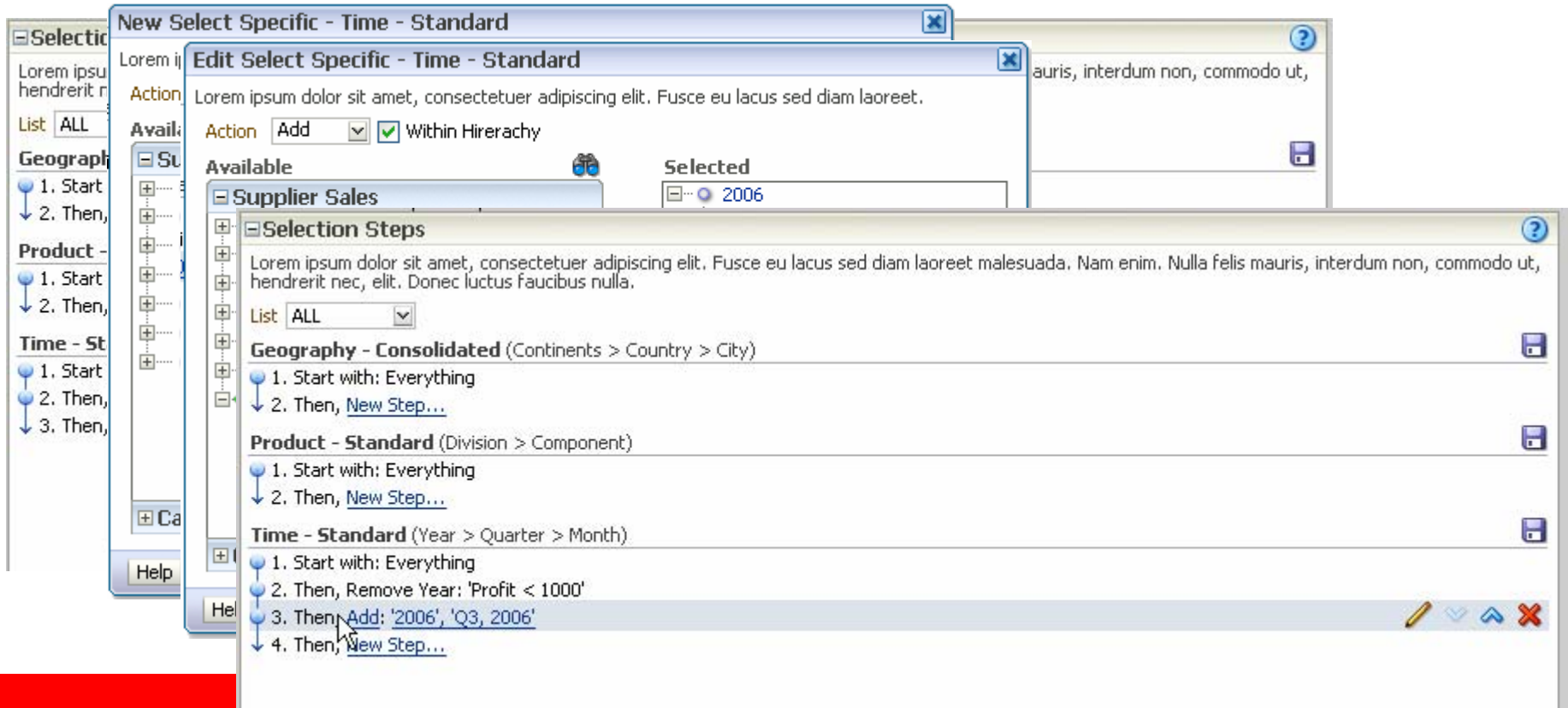
- Start with: Everything
- [New...](#)

Time - Standard

- Start with: Everything
- Remove Year: 'Profit < 1000'
- [New...](#)

Member Selection

- Detail Dialog to Add a new step
- Add / Keep / Remove functionality
- Simple user interface to pick desired members



Calculated Item

- Create member
- No member expansion
- Simple Aggregation
- Custom Formula

Edit Calculated Item

2000

	All Products		Accessory Division		Audio Division		Video Division	
	Costs	Sales	Costs	Sales	Costs	Sales	Costs	Sales
World	87,158,677	116,857,329	3,915,488	4,778,126	44,531,199	63,131,986	38,711,990	48,947,217
Americas	25,657,127	34,267,589	1,121,574	1,343,622	13,775,590	19,526,096	10,759,963	13,397,871
Argentina	566,727	746,507	151,479	182,456	179,817	256,732	235,431	307,319
Brazil	1,140,600	1,503,613	50,305	62,630	553,942	754,725	536,353	686,258
Canada	6,795,588	9,099,325	220,682	262,108	3,217,745	4,631,021	3,357,161	4,206,196
Colombia	393,934	519,491	8,042	9,878	159,793	235,964	226,099	273,649
Mexico	1,700,475	2,161,787	73,420	87,877	815,630	1,078,983	811,425	994,927
USA	15,059,803	20,236,866	617,646	738,673	8,848,663	12,568,671	5,593,494	6,929,522
Asia	15,697,240	20,816,479	768,159	930,838	7,764,958	10,919,231	7,164,123	8,966,410
Australia	7,394,422	9,665,096	253,682	306,980	4,031,765	5,395,755	3,108,975	3,962,361
Europe	38,409,888	52,108,165	1,772,073	2,196,686	18,958,886	27,290,904	17,678,929	22,620,575
Other Territories	21,855,391	29,226,191	838,328	1,000,781	12,066,408	17,199,692	8,950,655	11,135,718

Custom Groups - Results

- Create member specific group
- Results in a new group 'Western Continents' being added in the Pivot table

Pivot Table

Editing from: "Report 1" Revert Done

Supplier Sales

List ALL

Measures: Costs, Promotion, Quota, Sales, Units

Channel

Geography: Continent, Region, Country, State, City, Consolidated, Standard, World, Africa, Americas, Asia, Australia, Europe

Product, Time

2000

All Products

	Costs		Sales		Accessory Division		Audio Division		Video Division	
	Costs	Sales	Costs	Sales	Costs	Sales	Costs	Sales	Costs	Sales
World	87,158,677	116,857,329	3,915,488	4,778,126	44,531,199	63,131,986	38,711,990	48,947,217		
Americas	25,657,127	34,267,589	1,121,574	1,343,622	13,775,590	19,526,096	10,759,963	13,397,871		
Argentina	566,727	746,507	151,479	182,456	179,817	256,732	235,431	307,319		
Brazil	1,140,600	1,503,613	50,305	62,630	553,942	754,725	536,353	686,258		
Canada	6,795,588	9,099,325	220,682	262,108	3,217,745	4,631,021	3,357,161	4,206,196		
Colombia	393,934	519,491	8,042	9,878	159,793	235,964	226,099	273,649		
Mexico	1,700,475	2,161,787	73,420	87,877	815,630	1,078,983	811,425	994,927		
USA	15,059,803	20,236,866	617,646	738,673	8,848,663	12,568,671	5,593,494	6,929,522		
Asia	15,697,240	20,816,479	768,159	930,838	7,764,958	10,919,231	7,164,123	8,966,410		
Australia	7,394,422	9,665,096	253,682	306,980	4,031,765	5,395,755	3,108,975	3,962,361		
Europe	38,409,888	52,108,165	1,772,073	2,196,686	18,958,886	27,290,904	17,678,929	22,620,575		
Western Continents	65,067,015	86,375,754	2,893,647	3,540,308	32,734,476	46,817,873	23,775,434	31,875,484		
Americas	25,657,127	34,267,589	1,121,574	1,343,622	13,775,590	19,526,096	10,759,963	13,397,871		
Europe	38,409,888	52,108,165	1,772,073	2,196,686	18,958,886	27,290,904	17,678,929	22,620,575		

Regional Profit and Sales

Criteria Results Advanced

Supplier Sales

List ALL

- Measures
 - Costs
 - Promotion
 - Quota
 - Sales
 - Cost
- Channel
- Geography
 - Continent
 - Region
 - Country
 - State
 - City
 - Geography - Consolidated
 - Geography - Standard
- Product
 - Division
 - Component
 - Product - Standard
- Time
 - Year
 - Quarter
 - Month
 - Time - Standard

Catalog

List ALL

- My Folders
- My Columns
- My Filters
- Public Folders

Hierarchy: Continents > Country > City

Modular Workspace

Selected Columns

Lorem ipsum dolor sit amet, consectetur adipiscing elit. Fusce eu lacus sed diam laoreet malesuada. Nam enim. Nulla felis mauris, interdum non, commodo ut, hendrerit nec, elit. Donec luctus faucibus nulla.

Geography	Product	Time	Measures
<ul style="list-style-type: none"> Geography - Standard <ul style="list-style-type: none"> Continent Country City 	Division	Year	Sales, Costs

Filters

Lorem ipsum dolor sit amet, consectetur adipiscing elit. Fusce eu lacus sed diam laoreet malesuada. Nam enim. Nulla felis mauris, interdum non, commodo ut, hendrerit nec, elit. Donec luctus faucibus nulla.

Division is equal to / is in 'Accessory Division, Fluid Division, Water Division'

AND Sales is greater than 4

Selections Steps

Lorem ipsum dolor sit amet, consectetur adipiscing elit. Fusce eu lacus sed diam laoreet malesuada. Nam enim. Nulla felis mauris, interdum non, commodo ut, hendrerit nec, elit. Donec luctus faucibus nulla.

List ALL

Geography - Standard (Continents > Country > City)

1. Start with: Everything
2. Then, Keep Continent: 'Sales >= 5'
3. Then, [New Step...](#)

Product - Standard (Division > Component)

1. Start with: Everything
2. Then, [New Step...](#)

Year

1. Start with: Everything
2. Then, [New Step...](#)

- Tailor work area to how you work
- Standard design and object positioning
- Common banner and header
- Contextual toolbar
- Drag and drop interaction
- Collapsible / Expandable panes

Modular Workspace – Criteria

Regional Profit and Sales

Criteria Results Advanced

Supplier Sales

List ALL

- Measures
 - Costs
 - Promotion
 - Quota
 - Sales
 - Cost
- Channel
- Geography
 - Continent
 - Region
 - Country
 - State
 - City
 - Geography - Consolidated
 - Geography - Standard
 - Africa
 - Am...
 - Asia
 - Australia
 - Europe
- Product
 - Division
 - Component
 - Product - Standard
- Time
 - Year
 - Quarter
 - Month

Catalog

Views

- Pivot Table
- Chart
- Table
- Title

Report 1

Title: Regional Profit and Sales

Pivot Table

2001

	Accessory Division		Audio Division		Video Division	
	Costs	Sales	Costs	Sales	Costs	Sales
Americas	100	155	100	285	100	220
Argentina	10	10	10	30	10	20
Brazil	10	10	10	50	10	30
Canada	10	20	10	60	10	40
Colombia	10	5	10	15	10	10
Mexico	10	10	10	30	10	20
USA	50	100	50	100	50	100
Asia	100	200	100	200	100	200
Europe	100	200	100	200	100	200

Table

2001

Continent	Country	City	Division	Costs	Sales
Americas	USA	Boston	Accessory Division	10	20
			Audio Division	10	20
			Video Division	10	20
	New York City	Accessory Division	10	20	
			Audio Division	10	20
			Video Division	10	20
		San Francisco	Accessory Division	10	20
			Audio Division	10	20
			Video Division	10	20

Hierarchy: Continents > Country > City

Modular Workspace – Results

Regional Profit and Sales

Criteria Results Advanced

Pivot Table
Supplier Sales

Editing from: "Report 1" Revert Done

- List ALL
- Measures
 - Costs
 - Promotion
 - Quota
 - Sales
 - Cost
 - Channel
 - Geography
 - Continent
 - Region
 - Country
 - State
 - City
 - Geography - Consolidated
 - Geography - Standard
 - Africa
 - Americas
 - Asia
 - Australia
 - Europe
 - Product
 - Division
 - Component
 - Product - Standard
 - Time
 - Year
 - Quarter
 - Month
- Catalog
- List ALL
- My Folders
 - My Calculated Items
 - My Columns
 - My Groups

2001

	Accessory Division		Audio Division		Video Division	
	Costs	Sales	Costs	Sales	Costs	Sales
Americas	100	155	100	285	100	220
Argentina	10	10	10	30	10	20
Brazil	10	10	10	50	10	30
Canada	10	20	10	60	10	40
Colombia	10	5	10	15	10	10
Mexico	10	10	10	30	10	20
USA	50	100	50	100	50	100
Asia	100	200	100	200	100	200
Australia	100	200	100	200	100	200
Europe	100	200	100	200	100	200

Layout

Lorem ipsum dolor sit amet, consectetur adipiscing elit. Fusce eu lacus sed diam laoreet malesuada. Nam enim. Nulla felis mauris, interdum non, commodo ut, hendrerit nec, elit. Donec luctus faucibus nulla.

Value Selectors Drop Here For Value Selectors

- Time
 - Year

Sections Drop Here For a Sectioned Report

Columns Drop Here For Columns

- Product
 - Division
- Measures
 - Costs
 - Sales

Rows Drop Here For Rows

- Geography
 - Geography - Standard

Excluded Drop Here to Exclude From this View Only

Modular Workspace – Pivot Table Editor

Regional Profit and Sales

Table Results Advanced

Editing from: "Report 1" Revert Done

Table

Supplier Sales

[Toolbar icons: Print, Refresh, Undo, Redo, Copy, Paste, etc.]

2001					
Continent	Country	City	Division	Costs	Sales
Americas	USA	Boston	Accessory Division	10	20
			Audio Division	10	20
			Video Division	10	20
	New York City		Accessory Division	10	20
			Audio Division	10	20
			Video Division	10	20
	San Francisco		Accessory Division	10	20
			Audio Division	10	20
			Video Division	10	20

Layout Lorem ipsum dolor sit amet, consectetur adipiscing elit. Fusce eu lacus sed diam laoreet malesuada. Nam enim. Nulla felis mauris, interdum non, commodo ut, hendrerit nec, elit. Donec luctus faucibus nulla.

Value Selectors Drop Here For Value Selectors

Channel Time

Distribution Method Year

Sections Drop Here For a Sectioned Report

Columns Drop Here For Columns

Geography Product Measures

Market Region Brand Dollars Units

Excluded Drop Here to Exclude From this View Only

Time

Quarter

Measures

- Costs
- Promotion
- Quota
- Sales
- Cost

Channel

Geography

- Continent
- Region
- Country
- State
- City
- Geography - Consolidated
- Geography - Standard
 - Africa
 - Americas
 - Asia
 - Australia
 - Europe

Product

- Division
- Component
- Product - Standard

Time

- Year
- Quarter
- Month

Hierarchy: Cont

Catalog

List ALL

My Folders

- My Calculated Items
- My Columns
- My Groups

Modular Workspace –Table Editor

Map

Supplier Sales



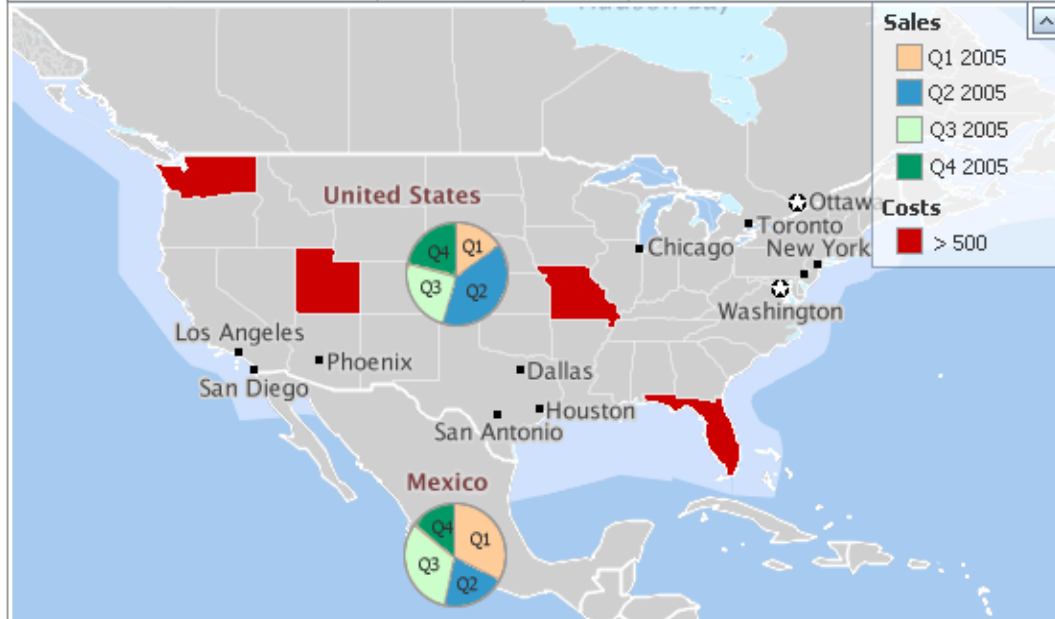
List ALL

- Measures
 - Costs
 - Promotion
 - Quota
 - Sales
 - Cost
- Channel
- Geography
 - Continent
 - Region
 - Country
 - State
 - City
 - Geography - Consolidated
 - Geography - Standard
 - Africa
 - Americas
 - Asia
 - Australia
 - Europe
- Product
 - Division
 - Component
 - Product - Standard
- Time
 - Year
 - Quarter
 - Month

Catalog

List ALL

- My Folders
 - My Calculated Items
 - My Columns
 - My Groups



BI Data Layers

- Pie Graph**
Country: Sales, Quarter
- Color Fill**
State: Costs, Year
- Conditional Format**
State: Costs
 - > 500
 - Between 250 and 500
 - < 250

Create a [new BI Layer...](#)

Map Features

- City Labels
- Rivers

Layout

Lorem ipsum dolor sit amet, consectetur adipiscing elit. Fusce eu lacus sed diam laoreet malesuada. Nam enim. Nulla felis mauris, interdum non, commodo ut, hendrerit nec, elit. Donec luctus faucibus nulla.

Value Selectors [v] Drop Here For Value Selectors

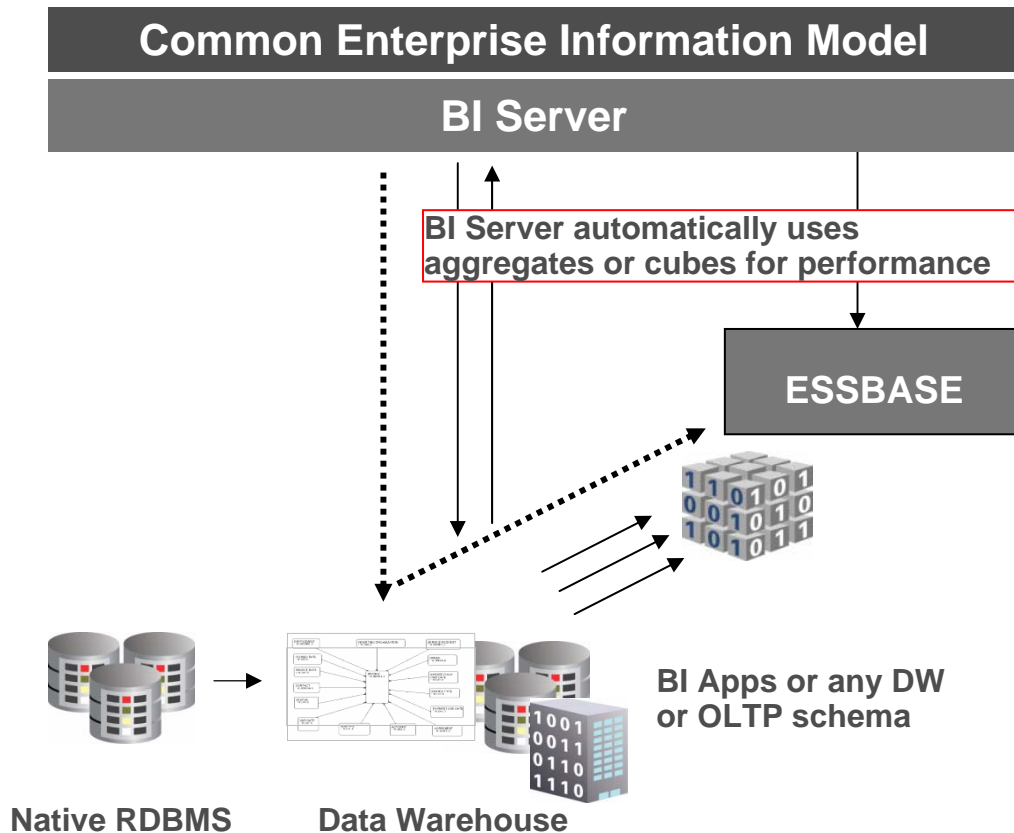
GeoMap [v] [v] Drop Here to Display on the GeoMap

Geography	Time	Product	Measures
Country [v]	Year [v]	Division [v]	Sales [v]
State [v]	Quarter [v]		Costs [v]

Geographical Map Editor

Essbase as Performance Accelerator for OBIEE and OBI Apps

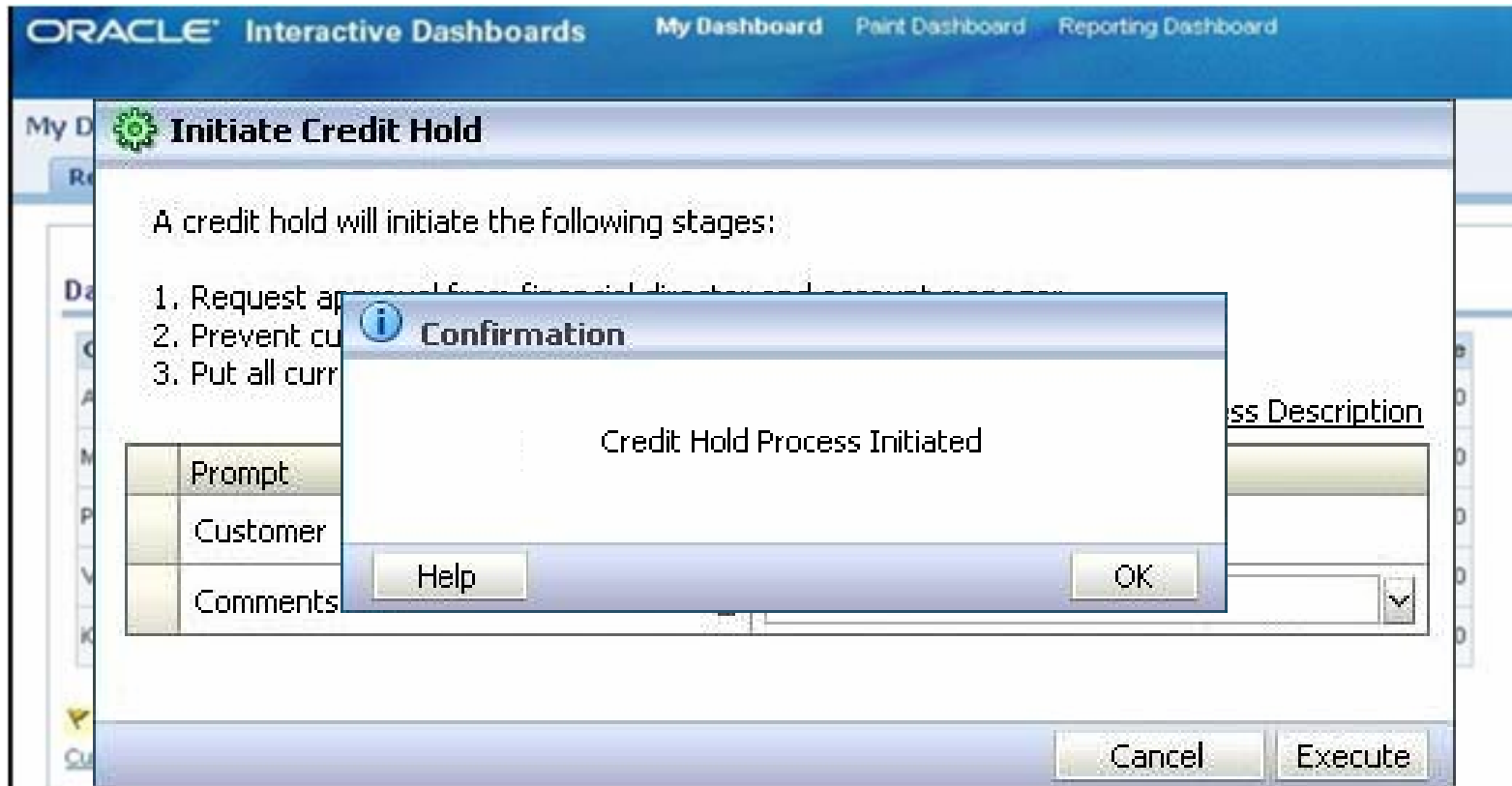
Available with OBIEE 11g



- BI Server leverages summary data whenever possible to accelerate queries
- A sound aggregation strategy can transparently improve end-user query performance by many orders of magnitude
- Aggregate Persistence in OBIEE since 10.1.3.2 release for relational sources
 - Automatically defines, populates and maps metadata to system generated aggregate star schemas
 - Extremely low TCO
- Aggregate Persistence to generate Essbase and Oracle OLAP cubes planned for OBIEE 11g

Insight Into Action

Invoking Business Processes from BI Dashboards



BI EE Scorecard

Fully Integrated Scorecarding in BI EE 11g

Leverage Key Platform Strengths

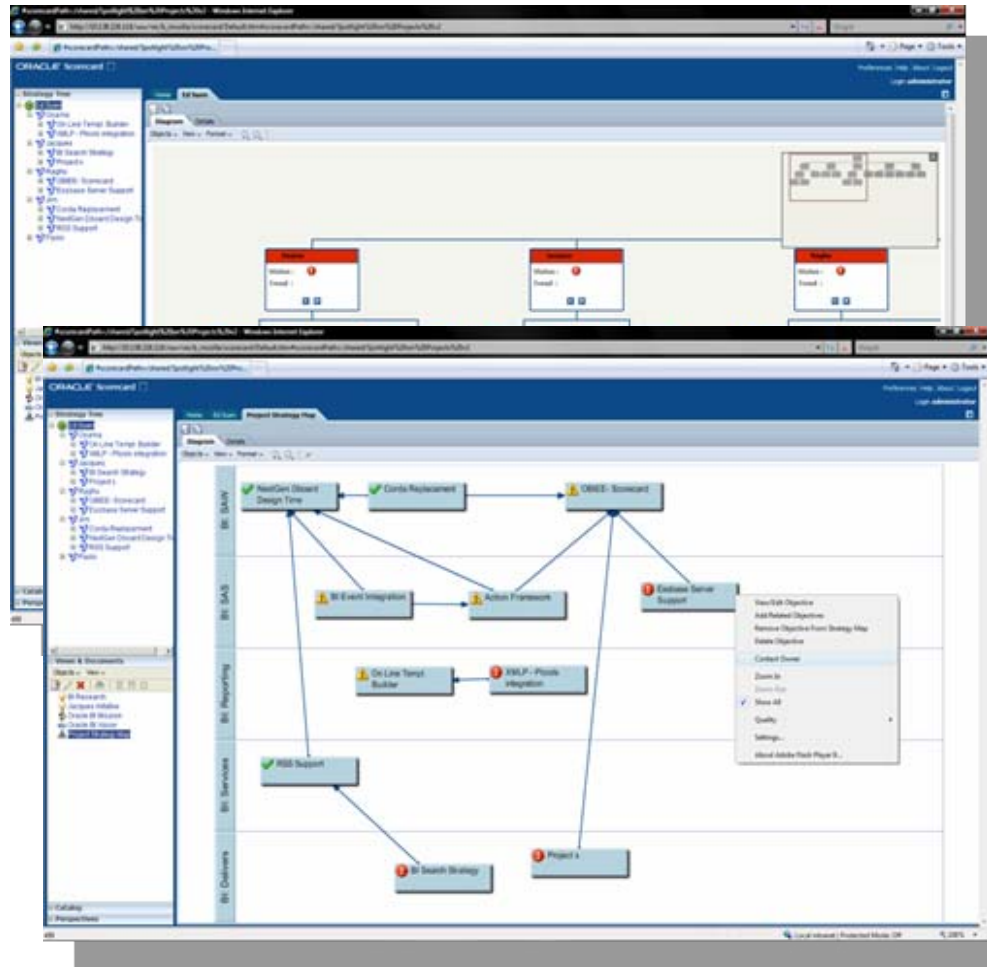
- Common, Shared Semantic metadata layer, security, etc..
- KPIs part of semantic model
- Data source agnostic BI

Best In Class Functionality

- Dimensional KPIs
- Strategy maps, Cause & Effect, Strategy Trees, Watchlists

Seamless Navigation to Rich BI Services

- Interactive Tables, Crosstabs, Charts
- Accessible to all BI EE interfaces
- Alerting, Notification, Workflow



Product Disposition

Strategic products

Function

- BI Server
- OLAP server
- Dashboards
- Ad hoc query
- Alerting
- Pixel-perfect reporting
- Office
- Balanced Scorecard
- Print-quality Financial Reports

Strategic BI Products

- OBI EE Server
- Essbase
- OBI Dashboards
- OBI 11g Answers+
- OBI Delivers
- BI Publisher
- SmartView (with OBI Office converged)
- OBI EE 11g Scorecard
- Hyperion Financial Reporting

Protect, Extend, Evolve

- Discoverer
- Web Analysis
- Interactive Reporting
- SQR Production Reporting
- Oracle Scorecard
- PeopleSoft Scorecard
- Hyperion Performance Scorecard

Strategic Product

- > OBI EE
- > OBI Answers+ 11g
- > OBI Dashboards, OBI Answers
- > OBI Publisher
- > OBI Scorecard 11g
- > OBI Scorecard 11g
- > OBI Scorecard 11g

Oracle BI EE 11g at a Glance

- BI SE to BI EE Migration
- Answers Plus
- MLS and double column support
- Fusions Business Components
- Select Physical
- Analytic Workspace Admin Tool support
- Server Credential Stored Framework (CSF)
- JAAS integration
- User Population Integration
- Native Windows 64 bit support
- Admin Tool Wizard
- Admin Tool Expression builder UI
- Caching Enhancements - combined cached results
- Multi-App Support
- Server Process Control Service
- Fusion Clustering
- Logging Framework (ODL)
- Runtime Time series and Level-based measures
- Data Mart Automation for Analytics Workspaces
- Data Mart Automation Parallel Load
- Data Mart Automation Auto-Indexing
- Data Mart Automation for Essbase
- Oracle 11g Lightweight session support
- BI Server integration with Hyperion Workspace
- HFM gateway
- Support for ReadOnly RDBMS
- FMW Audit framework
- Externalization of properties
- Portable Cache storage
- Near Zero Downtime
- Analytic Workspace Access
- Selections and Custom Aggregates
- Value, Ragged and Skip level hierarchies
- Maximize Answers query shipping to MDX sources
- Support for Custom Members
- Linux 64-bit Port
- XML based metadata API
- EBusiness Suite Action Link Formatter
- Workflow Services Integration
- Fusion Systems Management
- Backup & Recovery
- Install
- Cloning
- Patching
- BI: SAW
- Fusion BI View Components
- Pervasive Double Column Support
- Answers Plus (Framework)
- Answers Pivot View
- Answers Plus (User Interfaces)
- Publishing and Reporting UI Integration
- Programmatic VO against OracleBI Server
- Unified and Enhanced Prompting
- Presentation Services KPI Support
- Briefing Books to PDF Format
- Enhanced Action Links
- Answers Geographical Mapping View
- BLAF+ Compliance
- Oracle chart component
- My Dashboard template
- Scorecard
- Visualization Enhancements
- Disco content into BI Dashboards
- Enhanced Action Links Dashboard Interaction
- Unified Framework
- Formula Template Enhancements
- Prompted Segmentation
- Integrate BI PS with Hyperion S9 Workspace
- Integrate BI PS with Hyperion Smart Space
- Slider Dashboard Prompt
- Specify Master/Detail Relationships
- Simple Subject Area
- Online Report Builder
- Advanced Print Service
- Oracle Reports Migration Tool
- BI Publisher - JDeveloper integration
- Word Template Builder Enhancements
- RTF Master Template
- BI Office support for Writeback
- Data Template UI
- Query Builder support for Physical Select
- BI Excel Addin Enhancements
- BI PPT Addin Enhancements
- Reporting solutions for AS products
- BI Publisher FMW (AS) integration
- BI Publisher Hyperion Integration

ORACLE®