



**ORACLE®**

## **Dare to OLAP – An Essbase Workshop**

Ljiljana Perica, Oracle Business solution Team Leader

# Oracle's EPM System Vision

## Focus on Today and Plan for Tomorrow

- Link strategic goals to operational decisions
- Integrates all management processes
- Deliver consistent, reliable insights to drive action
- Lower costs and reduces system complexity
- Single version of the truth



# Oracle Hyperion Essbase

The **OLAP** (Online Analytical Processing) **server** that provides an **environment** for rapidly developing **custom** analytic and enterprise performance management applications



# BI Tools are Designed for Reporting

## Essbase is Tuned for Analysis

### REPORTING

Which customers spend the most?

What did this customer buy?

What is the Q4 revenue forecast?

### ANALYSIS

Which customers are most profitable?

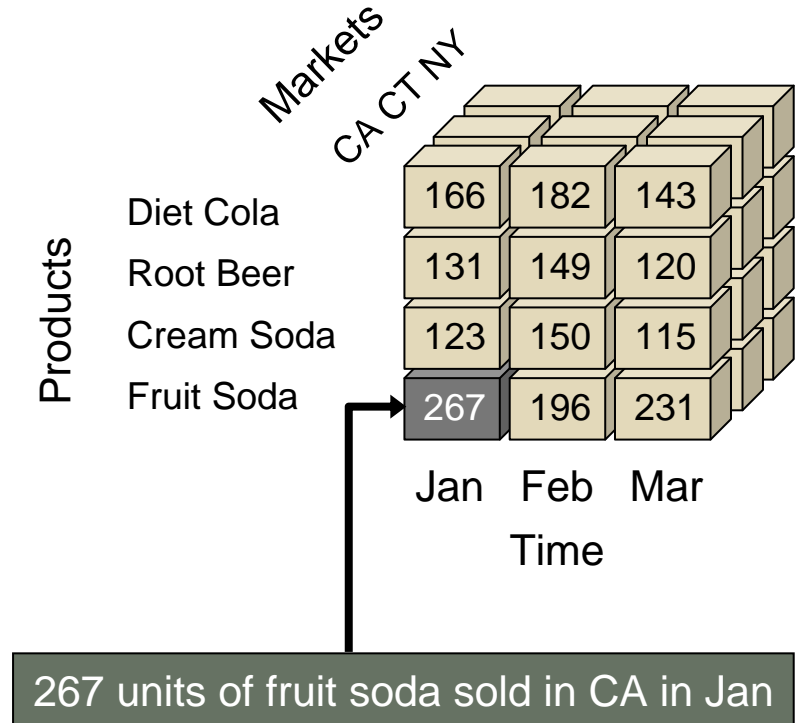
What is the customer likely to buy next?

What if demand falls short of forecast?

***Essbase = Extended Excel Spreadsheet Base***

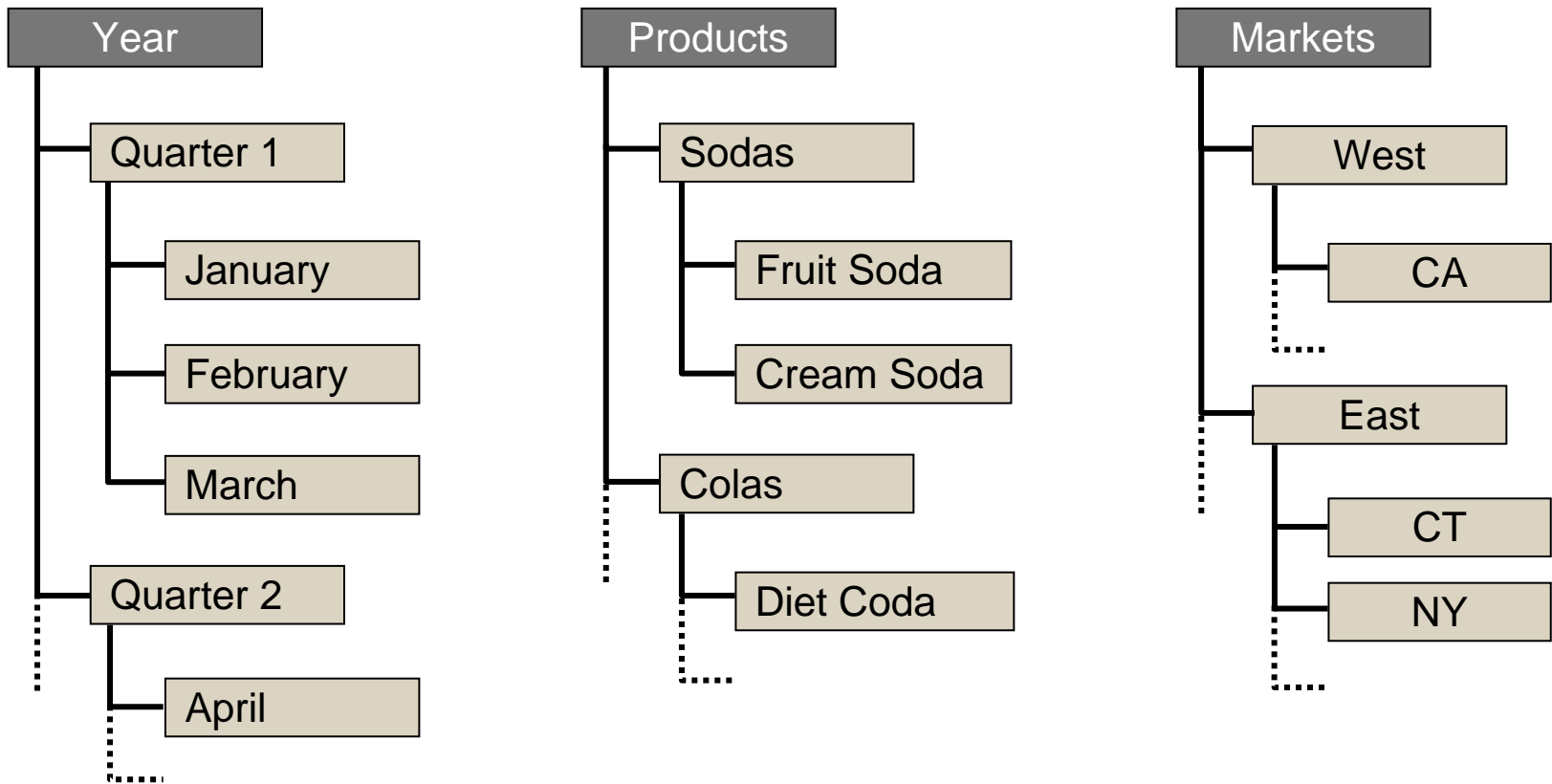
# 3-D Cube

- Dimensions
  - Time
  - Products
  - Markets
- Members
  - Jan, Feb, Mar (Time)
  - Diet Cola, Root Beer, Cream Soda, Fruit Soda (Products)
  - CA, CT, NY (Markets)
- Measures
  - Sales



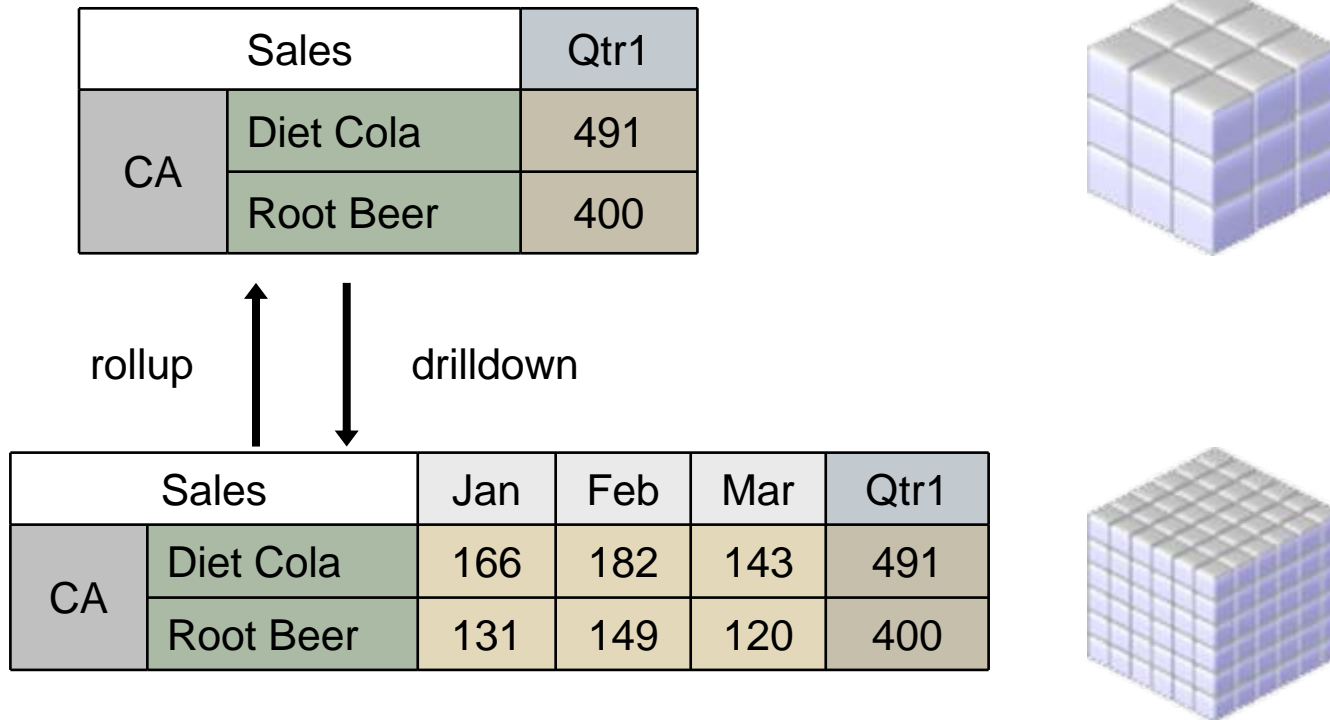
# Dimension Hierarchies

For each dimension, you can organize the set of its members in a hierarchy.



# Rolling Up and Drilling Down

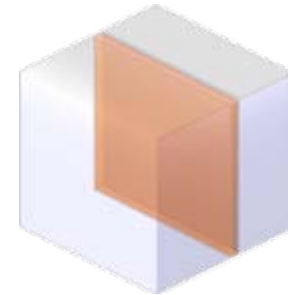
- Rollup summarizes data by climbing up the dimension hierarchy (dimension reduction).
- Drilldown is the reverse of rollup.



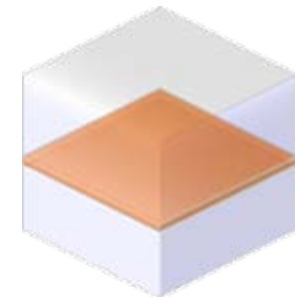
# Pivoting

Pivot rotates the data cube to change the data visualization.

Sales		January	February
CA	Diet Cola	166	182
	Root Beer	131	149
CT	Diet Cola	78	56
	Root Beer	55	69



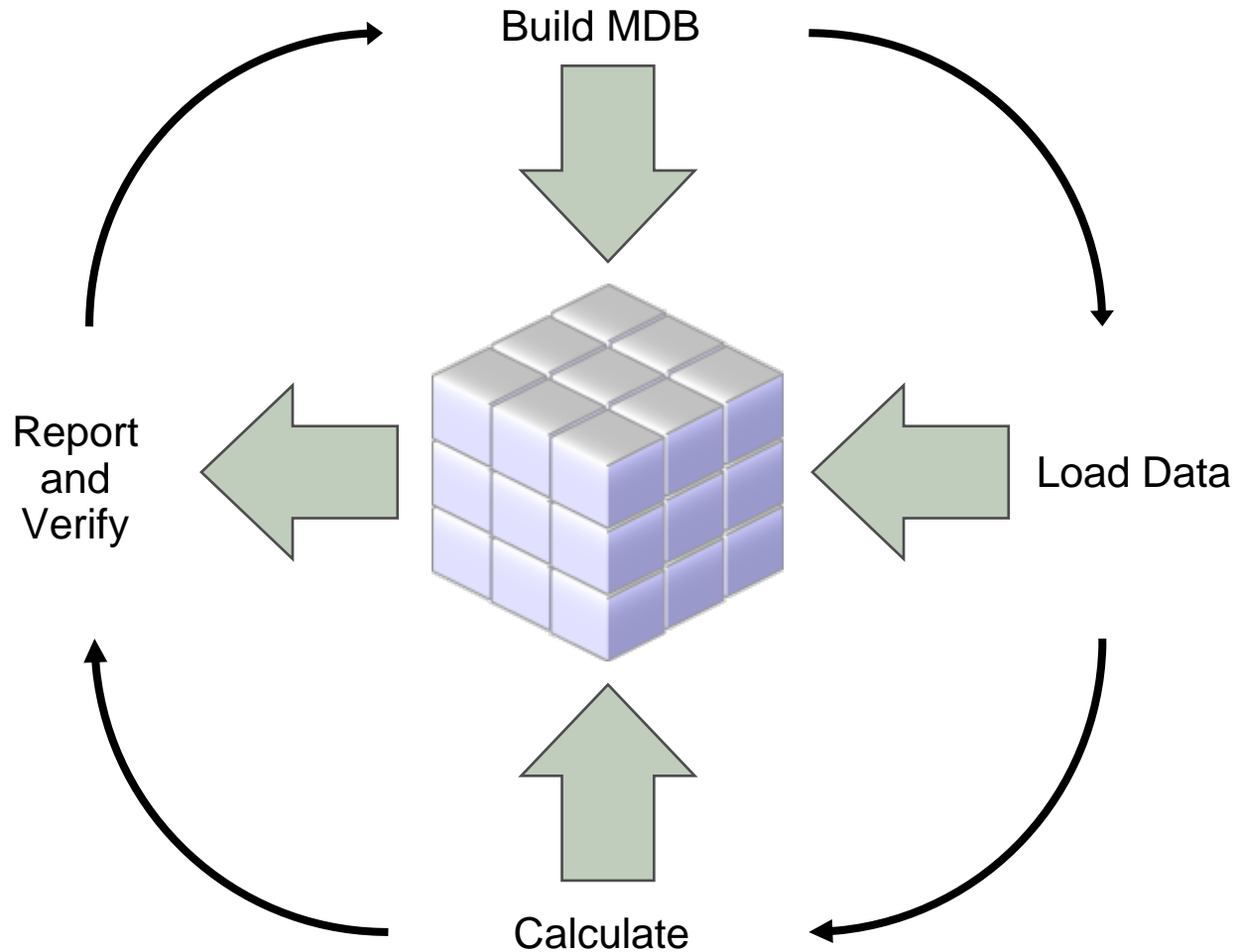
Sales	CA		CT	
	January	February	January	February
Diet Cola	166	182	78	56
Root Beer	131	149	55	69





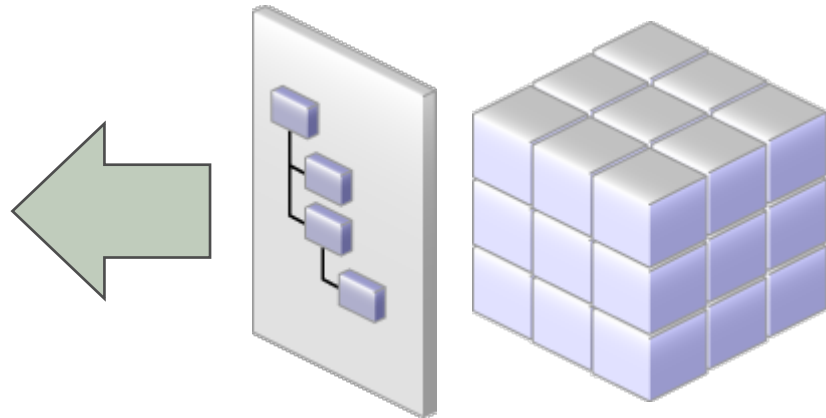
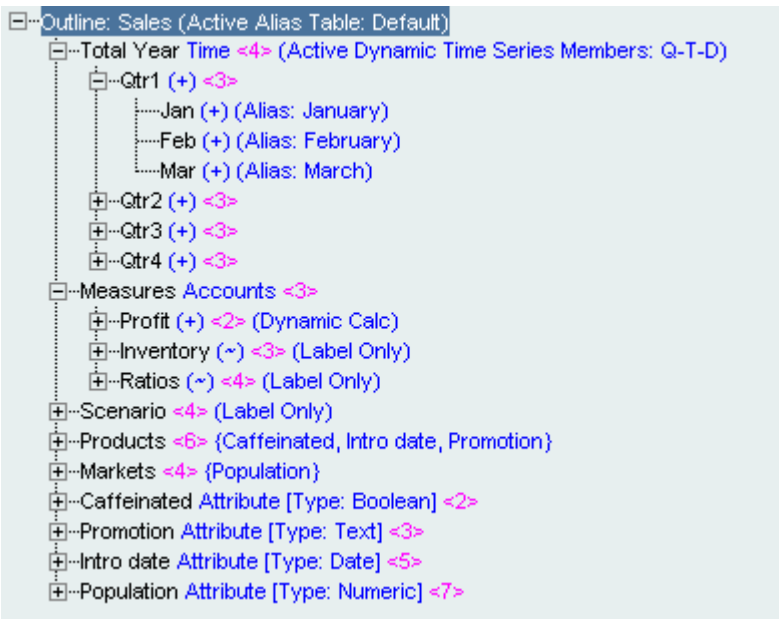
# Life Cycle of Essbase Database Design

Designing an Essbase database is a cyclic process ...

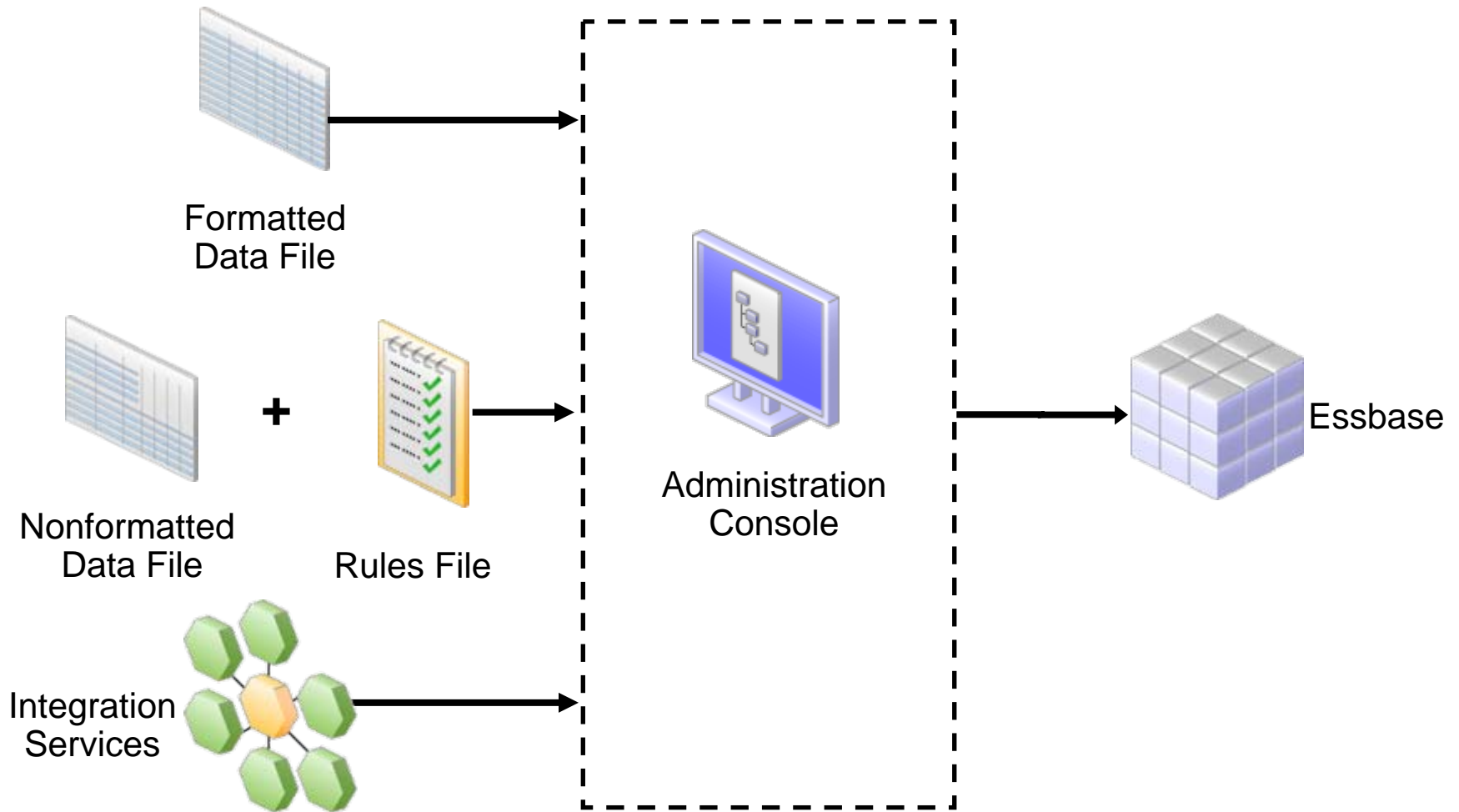


# Database Outline

- Plays the key role in the life cycle of the Essbase database design
- Database development begins with creating a database outline
- Tree structure for dimension hierarchies
- Consolidations and mathematical relationships between members
- Outline Editor



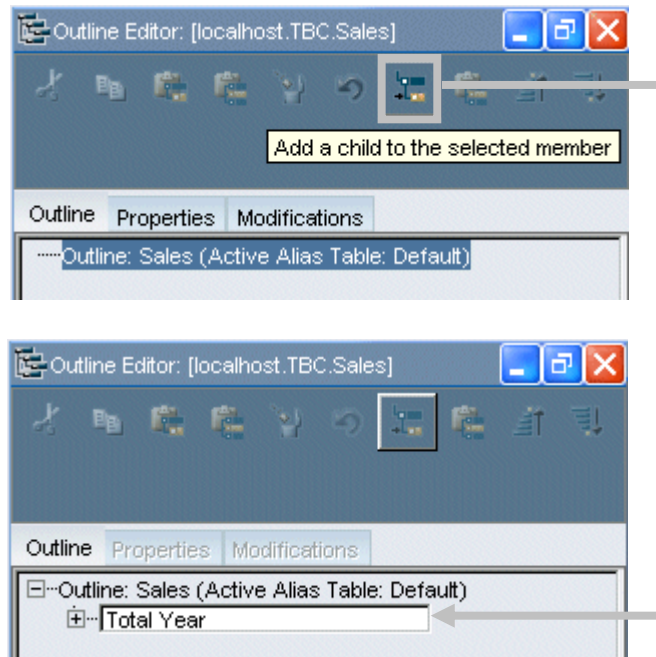
# Loading Data and Metadata



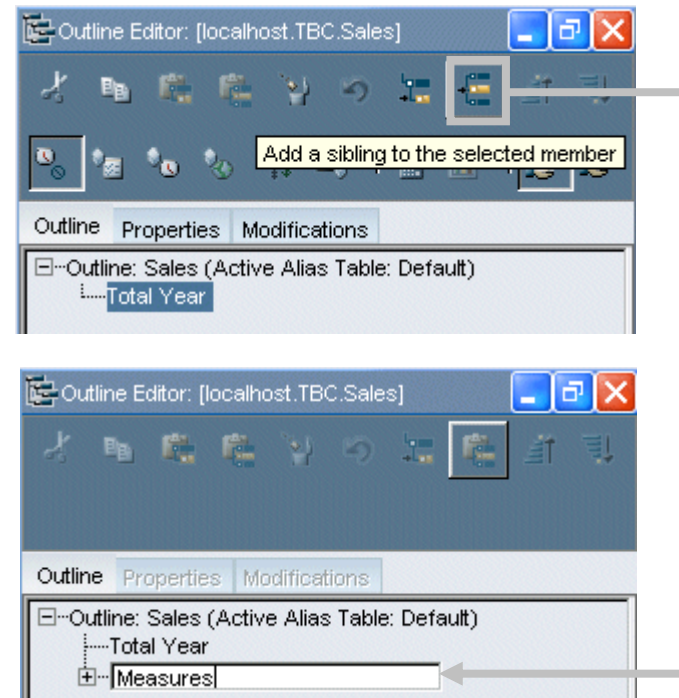
# Adding Dimensions and Members

You can add dimensions and members to the outline manually or dynamically.

Adding a child

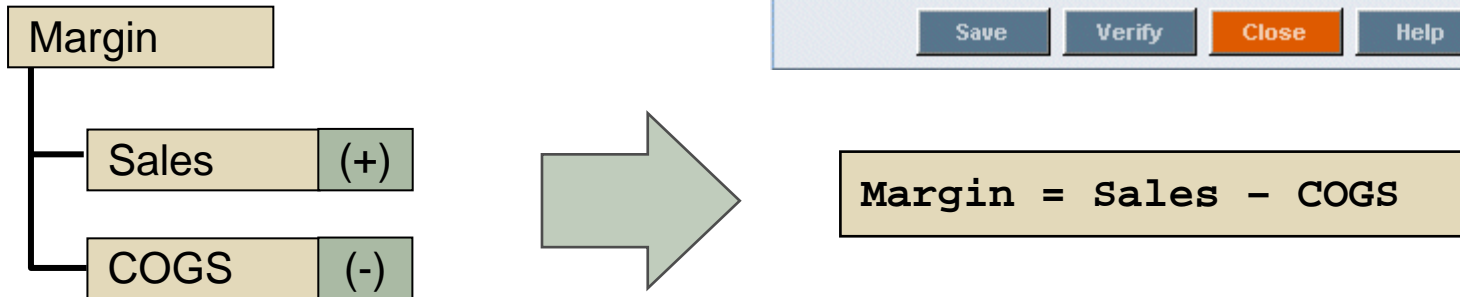
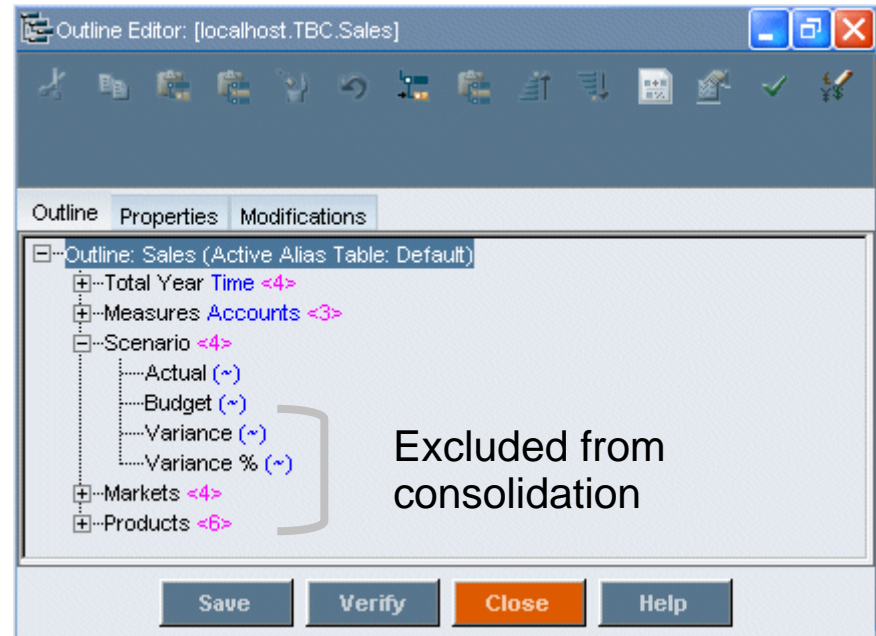


Adding a sibling



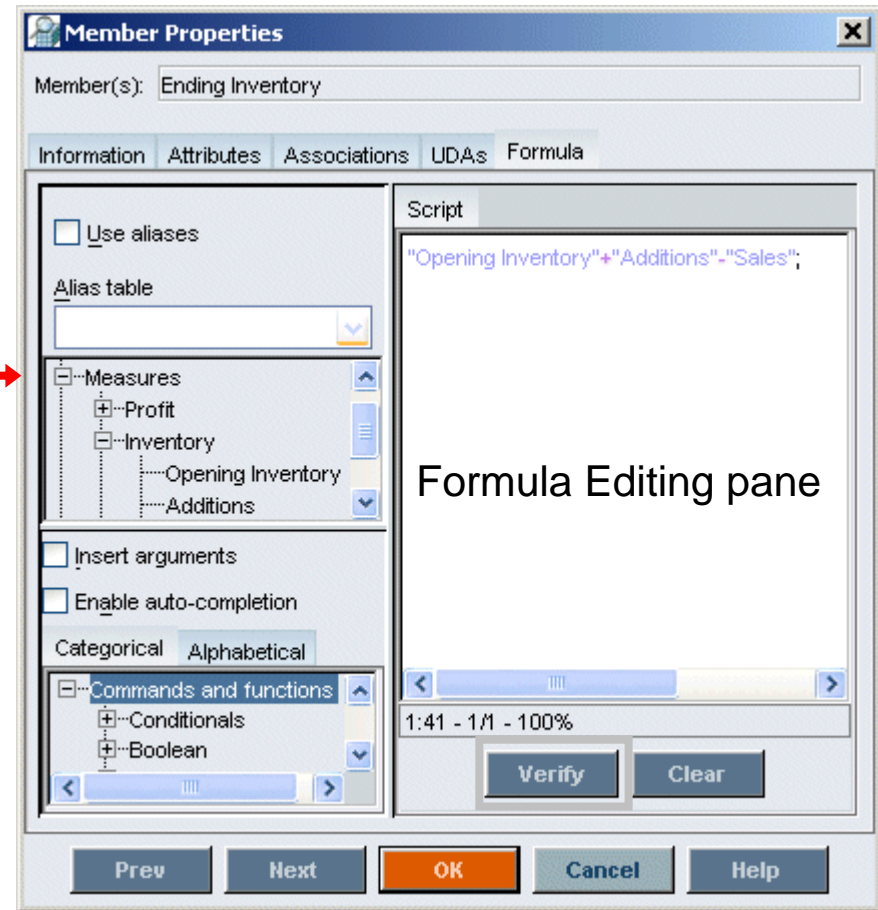
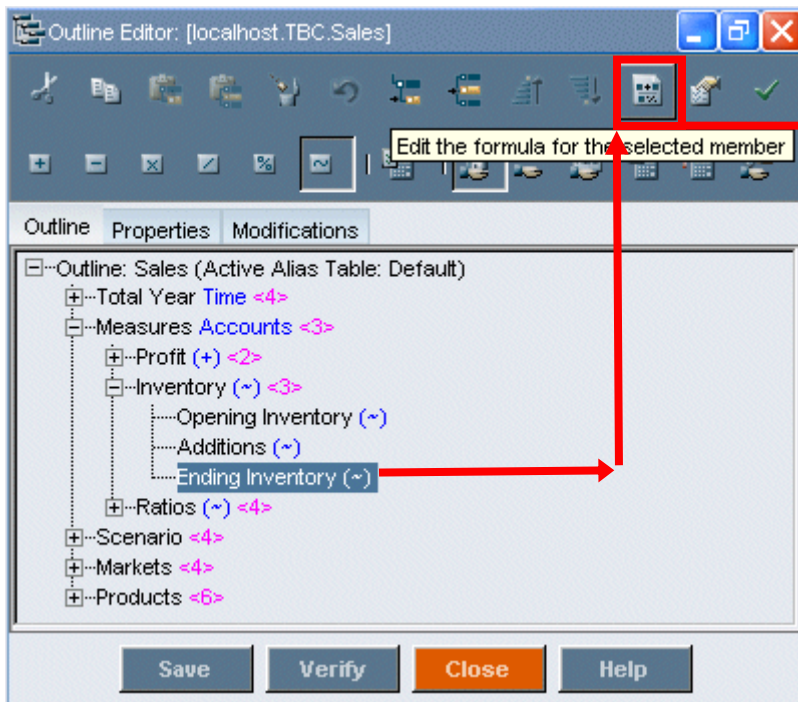
# Consolidation Property and Operators

- Consolidation property defines how the member rolls up to its parent.
- Consolidation operators:
  - Addition (+)
  - Subtraction (-)
  - Multiplication (\*)
  - Division (/)
  - Percent (%)
  - Ignore (~)



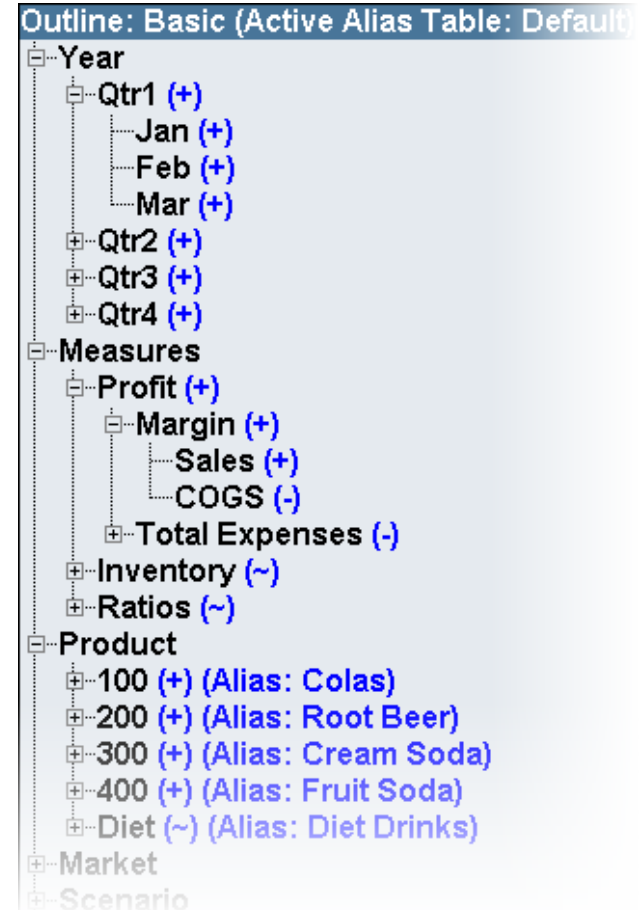
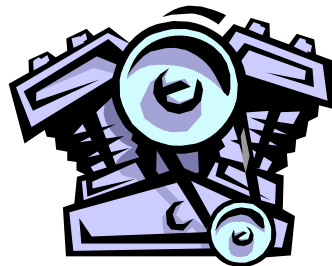
# Creating Member Formulas

- Create the member formula in Formula Editor



# Superior Calculation Power

- Widest range of functionality
  - Simple aggregations to complex cross dimensional allocations
  - Results stored or calculated upon retrieval
  - Relationship aware
  - Application wide or subset specific
  - Conditional and procedural logic





# Comprehensive Library of Functions

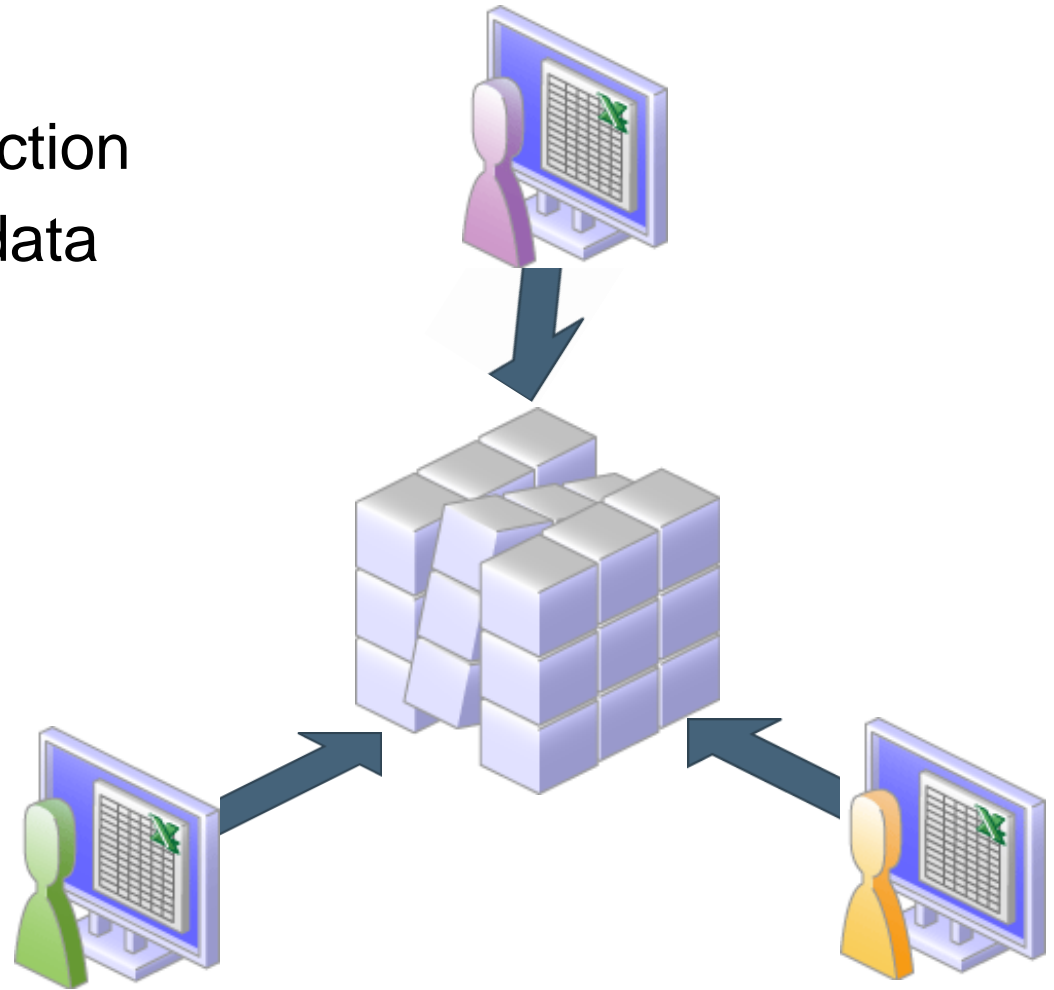
- 350+ functions
- Simple syntax
- Extensible
- Single point of maintenance

<a href="#">@ABS</a>	<a href="#">@ICHILDREN</a>	<a href="#">@MAXRANGE</a>	<a href="#">@RELATIVE</a>
<a href="#">@ACCUM</a>	<a href="#">@IDESCENDANTS</a>	<a href="#">@MAXS</a>	<a href="#">@REMAINDER</a>
<a href="#">@ALLANCESTORS</a>	<a href="#">@ILSIBLINGS</a>	<a href="#">@MAXSRANGE</a>	<a href="#">@REMOVE</a>
<a href="#">@ALIAS</a>	<a href="#">@INT</a>	<a href="#">@MDALLOCATE</a>	<a href="#">@ROUND</a>
<a href="#">@ALLOCATE</a>	<a href="#">@INTEREST</a>	<a href="#">@MDANCESTVAL</a>	<a href="#">@RSIBLINGS</a>
<a href="#">@ANCEST</a>	<a href="#">@IRDESCENDANTS</a>	<a href="#">@MDPARENTVAL</a>	<a href="#">@SANCESTVAL</a>
<a href="#">@ANCESTORS</a>	<a href="#">@IRR</a>	<a href="#">@MDSHIFT</a>	<a href="#">@SHARE</a>
<a href="#">@ANCESTVAL</a>	<a href="#">@IRSIBLINGS</a>	<a href="#">@MEDIAN</a>	<a href="#">@SHIFT</a>
<a href="#">@ATTRIBUTE</a>	<a href="#">@ISACCTYPE</a>	<a href="#">@MEMBER</a>	<a href="#">@SHIFTMINUS</a>
<a href="#">@ATTRIBUTEVAL</a>	<a href="#">@ISANCEST</a>	<a href="#">@MERGE</a>	<a href="#">@SHIFTPLUS</a>
<a href="#">@ATTRIBUTESVAL</a>	<a href="#">@ISCHILD</a>	<a href="#">@MIN</a>	<a href="#">@SIBLINGS</a>
<a href="#">@ATTRIBUTEVAL</a>	<a href="#">@ISDESC</a>	<a href="#">@MINRANGE</a>	<a href="#">@SLN</a>
<a href="#">@AVG</a>	<a href="#">@ISGEN</a>	<a href="#">@MINS</a>	<a href="#">@SPARENTVAL</a>
<a href="#">@AVGRANGE</a>	<a href="#">@ISIANCEST</a>	<a href="#">@MINSRANGE</a>	<a href="#">@SPLINE</a>
<a href="#">@CALCMODE</a>	<a href="#">@ISIBLINGS</a>	<a href="#">@MOD</a>	<a href="#">@STDEV</a>
<a href="#">@CHILDREN</a>	<a href="#">@ISICHILD</a>	<a href="#">@MODE</a>	<a href="#">@STDEVP</a>
<a href="#">@COMPOUND</a>	<a href="#">@ISIDESC</a>	<a href="#">@MOVAVG</a>	<a href="#">@STDEV RANGE</a>
<a href="#">@COMPOUNDGROWTH</a>	<a href="#">@ISIPARENT</a>	<a href="#">@MOVMAX</a>	<a href="#">@SUBSTRING</a>
<a href="#">@CONCATENATE</a>	<a href="#">@ISISIBLING</a>	<a href="#">@MOV MED</a>	<a href="#">@SUM</a>
<a href="#">@CORRELATION</a>	<a href="#">@ISLEV</a>	<a href="#">@MOV MIN</a>	<a href="#">@SUMRANGE</a>
<a href="#">@COUNT</a>	<a href="#">@ISM BR</a>	<a href="#">@MOV SUM</a>	<a href="#">@SYD</a>
<a href="#">@CURGEN</a>	<a href="#">@ISPARENT</a>	<a href="#">@MOV SUM X</a>	<a href="#">@TODATE</a>
<a href="#">@CURLEV</a>	<a href="#">@ISSAMEGEN</a>	<a href="#">@NAME</a>	<a href="#">@TREND</a>
<a href="#">@CURRMBR</a>	<a href="#">@ISSAMELEV</a>	<a href="#">@NEXT</a>	<a href="#">@TRUNCATE</a>
<a href="#">@CURRMBRRANGE</a>	<a href="#">@ISSIBLING</a>	<a href="#">@NEXTS</a>	<a href="#">@UDA</a>
<a href="#">@DECLINE</a>	<a href="#">@ISUDA</a>	<a href="#">@NPV</a>	<a href="#">@VAR</a>
<a href="#">@DESCENDANTS</a>	<a href="#">@LEV</a>	<a href="#">@PARENT</a>	<a href="#">@VARPER</a>
<a href="#">@DISCOUNT</a>	<a href="#">@LEVMBRS</a>	<a href="#">@PARENTVAL</a>	<a href="#">@VARIANCE</a>
<a href="#">@EXP</a>	<a href="#">@LIST</a>	<a href="#">@POWER</a>	<a href="#">@VARIANCEP</a>
<a href="#">@FACTORIAL</a>	<a href="#">@LN</a>	<a href="#">@PRIOR</a>	<a href="#">@WITHATTR</a>
<a href="#">@GEN</a>	<a href="#">@LOG</a>	<a href="#">@PRIORS</a>	<a href="#">@XREF</a>
<a href="#">@GENMBRS</a>	<a href="#">@LOG10</a>	<a href="#">@PTD</a>	<a href="#">@XRANGE</a>
<a href="#">@GROWTH</a>	<a href="#">@LSIBLINGS</a>	<a href="#">@RANGE</a>	
<a href="#">@IALLANCESTORS</a>	<a href="#">@MATCH</a>	<a href="#">@RANK</a>	
<a href="#">@IANCESTORS</a>	<a href="#">@MAX</a>	<a href="#">@RDESCENDANTS</a>	



# Write-Back

1. Choose the intersection
2. Type the updated data value
3. Click submit



# Demo: Essbase Outline

# Speed of Thought Response

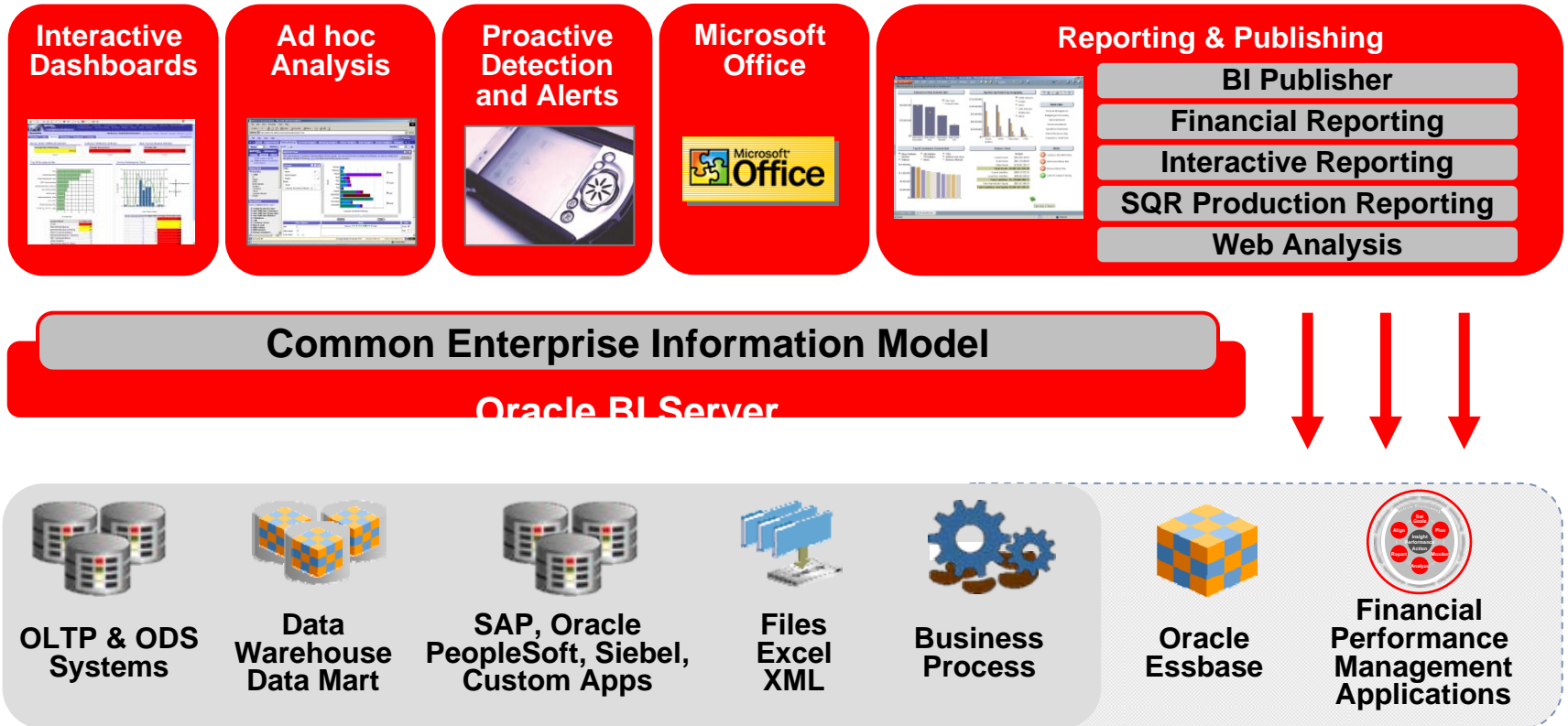
Essbase enables this “conversation with the data” – understanding that an answer to a question typically leads to another question – and business users can’t wait hours (or days) for that question to be answered



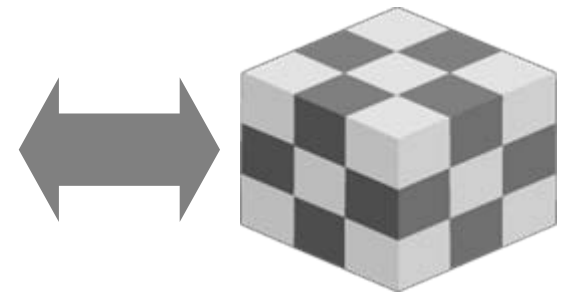
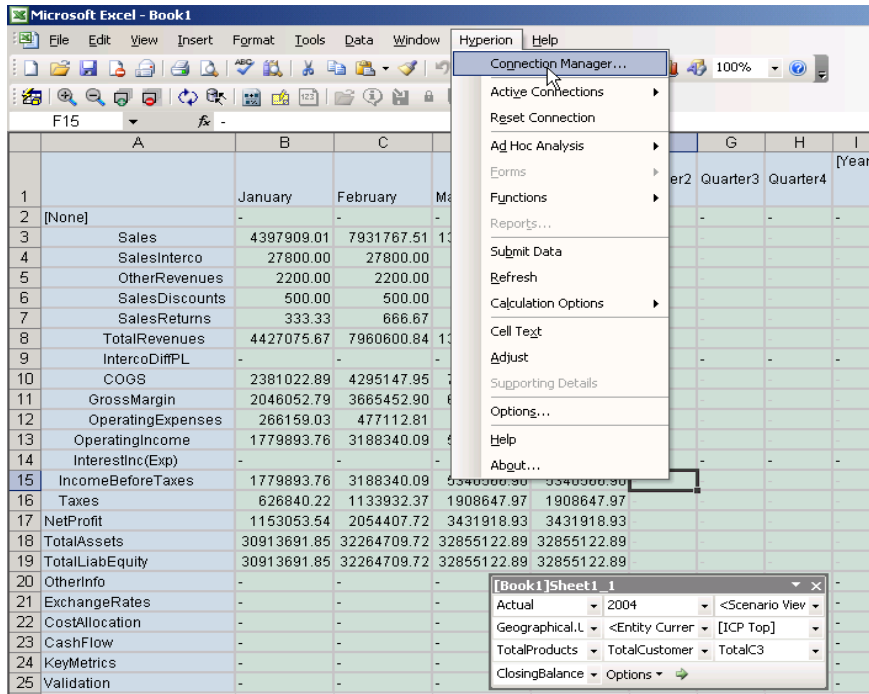
“ A conversation with the data ”

# Oracle BI Suite Enterprise Edition Plus

## Pervasive Information Delivery



# SmartView: Microsoft Office Integration



## • Capabilities across:

- Excel
- Word
- PowerPoint
- Outlook

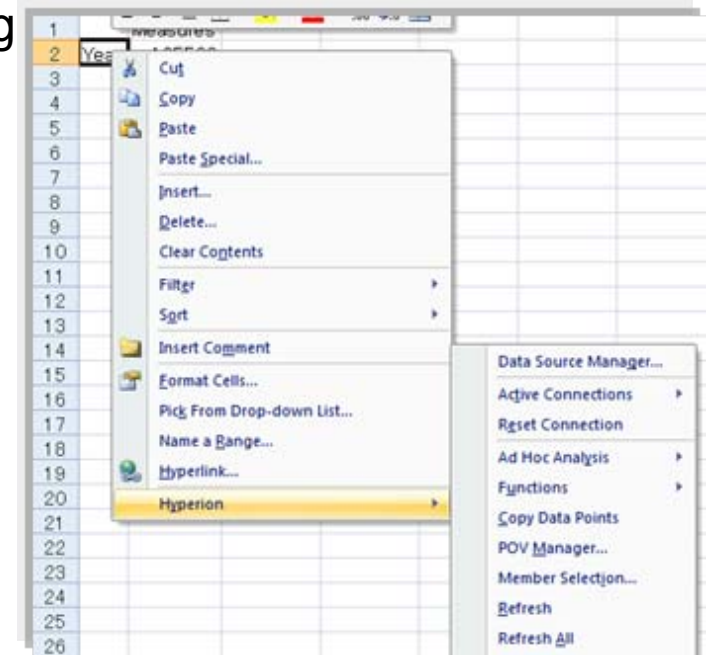
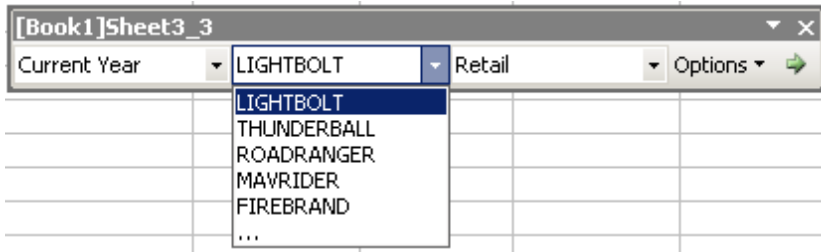


- familiar MS Office UI
- robust OLAP server with advanced analytics

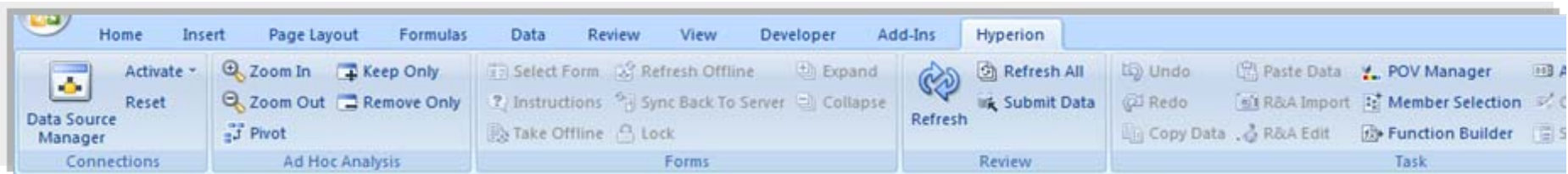
# Smart View for Office Toolbar

## Context Menu

- three principal interfaces you leverage when working with Smart View to query data from Essbase:

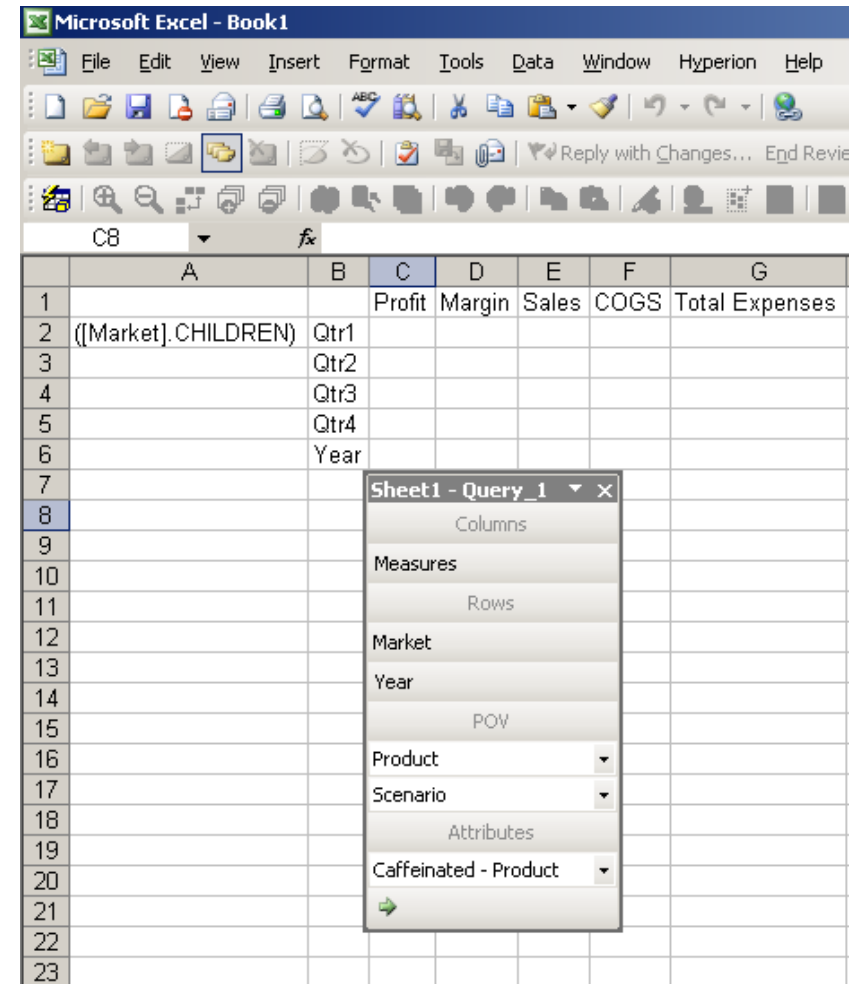
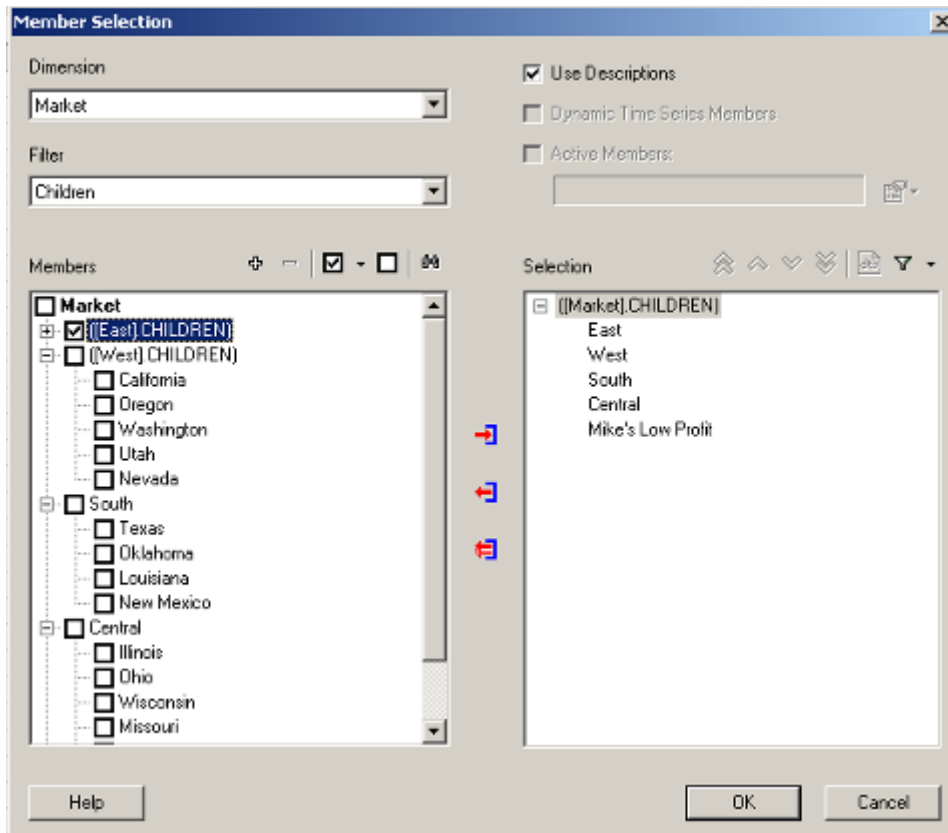


## Point of View Bar



## Hyperion Ribbon

# Member Selection and Query Design



## Refining the Query

# Dynamic Data Points

Financial Metrics – Forecast to Plan

	Forecast	Budget	Variance
Margin	\$54,387	\$214,140	(\$159,753)
Tot. Exp. Profit	\$28,587	\$84,760	\$56,173
Margin %	55.42%	57.40%	-1.98%

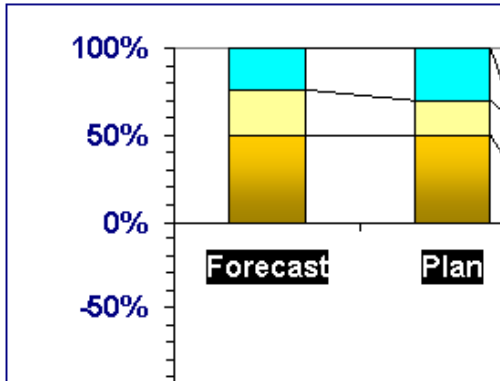
Change POV

Refresh

Connection:  
 Server - bisummit  
 Application - TBC  
 Cube - TBC  
 URL - http://localhost:13080/aps/SmartView  
 Provider - Analytic Services Smart View Provider

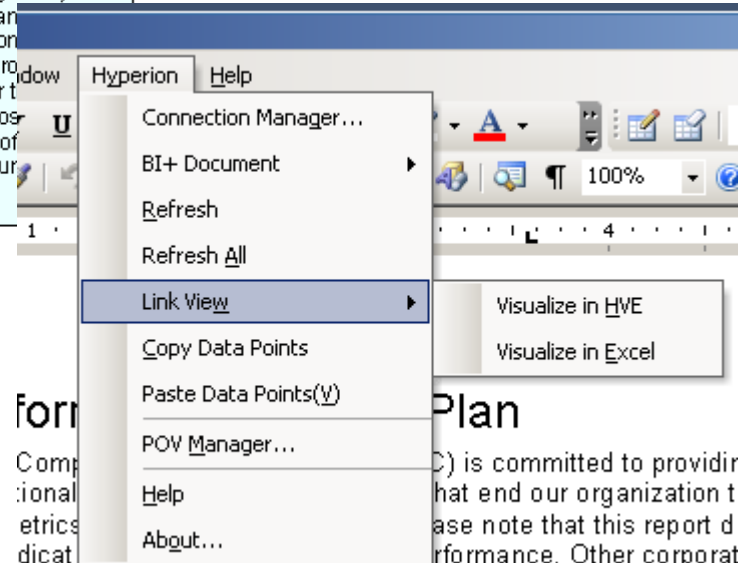
POV:  
 Measures - Margin %  
 Scenario - Budget  
 Market - Market  
 Product - Product  
 Year - Year

Alias Table:  
 none



Move data with context from one office component to another:

- Word
- PPT
- Outlook



Visualize to:

- Excel
- Visual Explorer

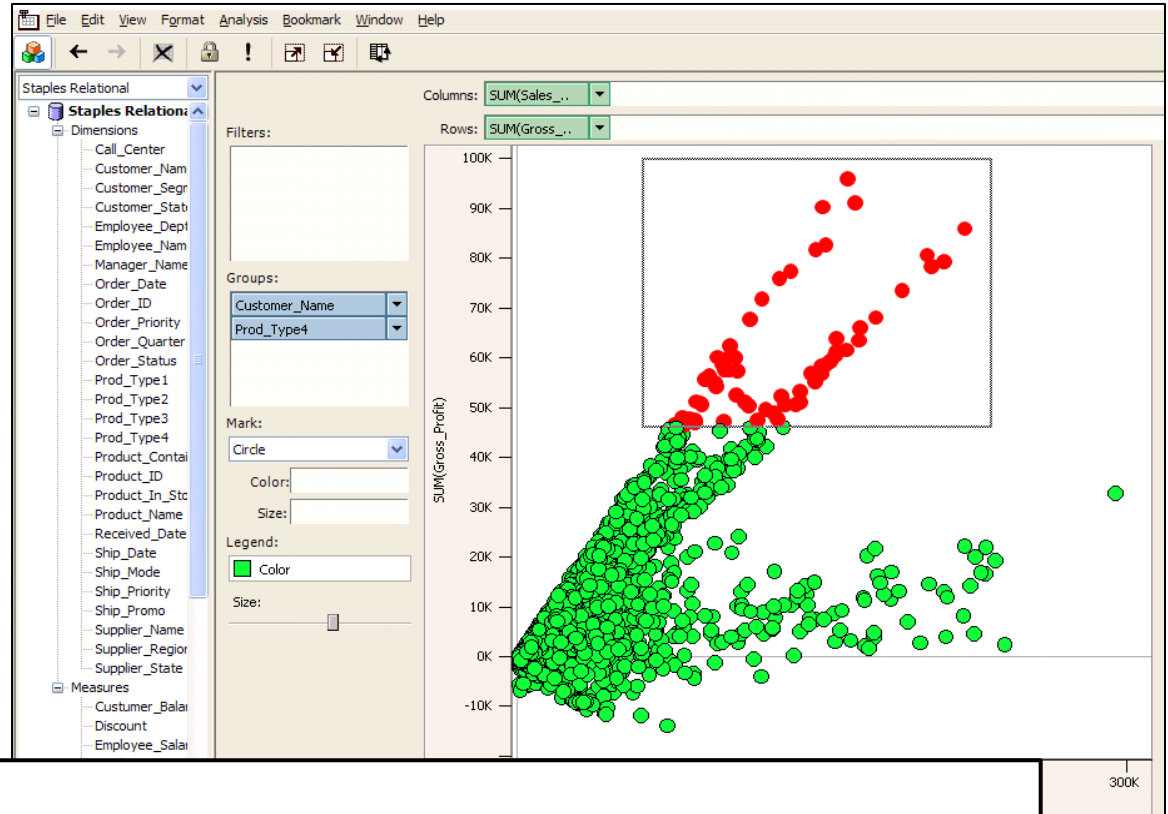
form  
 Comp  
 ional  
 etrics  
 dicat  
 Plan  
 C) is committed to providi  
 hat end our organization t  
 ase note that this report d  
 performance. Other corporat  
 nance indicators as they relate to the specific business functi



# Demo: Smart View & OBI EE

# Visual Explorer – Best in Class

- adaptive visualization tool that lets you see patterns in your data
- numeric outliers stand up clearly – then you can bring data in spreadsheet for enterprise distribution



**“Visual Explorer is not just a slick way to visualize, it’s a slick way to visually analyze.”**

– Wayne Eckerson, Industry Analyst, TDWI

# Demo: Hyperion Visual Explorer

# Why Essbase?

**1**

**Richest Business User Experience**

**2**

**Highly Advanced Calculation Engine**

**3**

**Best Custom Analytic Environment**

**ORACLE®**