



**ORACLE®**

## **Oracle BPM Suite overview – Standard Edition, Process Accelerators**

Duško Vukmanović

Principal Sales Consultant, [dusko.vukmanovic@oracle.com](mailto:dusko.vukmanovic@oracle.com)

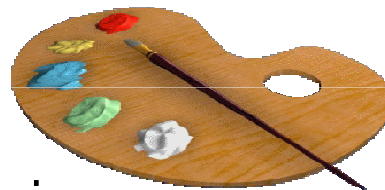
The following is intended to outline our general product direction. It is intended for information purposes only, and may not be incorporated into any contract. It is not a commitment to deliver any material, code, or functionality, and should not be relied upon in making purchasing decisions. The development, release, and timing of any features or functionality described for Oracle's products remains at the sole discretion of Oracle.

# Full Palette BPM

Oracle BPM is a Complete Application Extension Platform

Business Analyst Modeling & Simulation  
**Process Composer, BPM Studio**

End-to-end Business Visibility  
**BAM**



Collaborative Business Interfaces  
**Process Spaces**

Dynamic policies & Decision Logic  
**Business Rules**

Manage Approval Flows  
**Sophisticated Human workflow**

Build Rich Process Interaction  
**ADF, ADF Mobile**

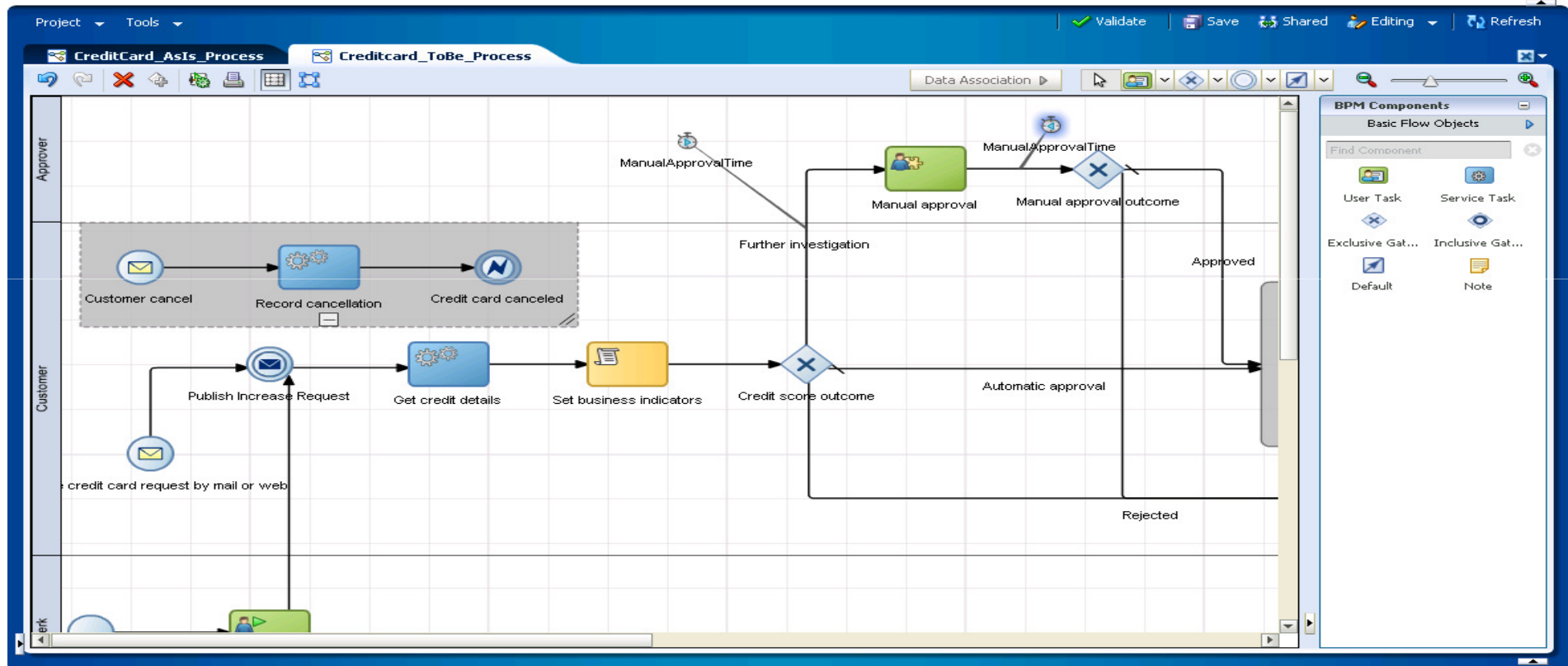
Leverage Existing Applications  
**Adapters, Service orchestration**

# Process Composer

## Business Analyst Driven Process Modeling

ORACLE Business Process Composer

Welcome, jstein Home Administration Preferences Help Sign Out



# Built In Business Rules

ORACLE Business Process Composer

Welcome, jstein Home Administration Preferences Help Sign Out

Project Tools Validate Save Shared Editing Refresh

CreditCard\_AsIs\_Process Creditcard\_ToBe\_Process CreditIncreaseRules

(x) Globals  
 Bucketsets  
 Links  
 Decision Functions

Rulesets  
 CreditIncreaseRules

CreditIncreaseRules View DecisionTable

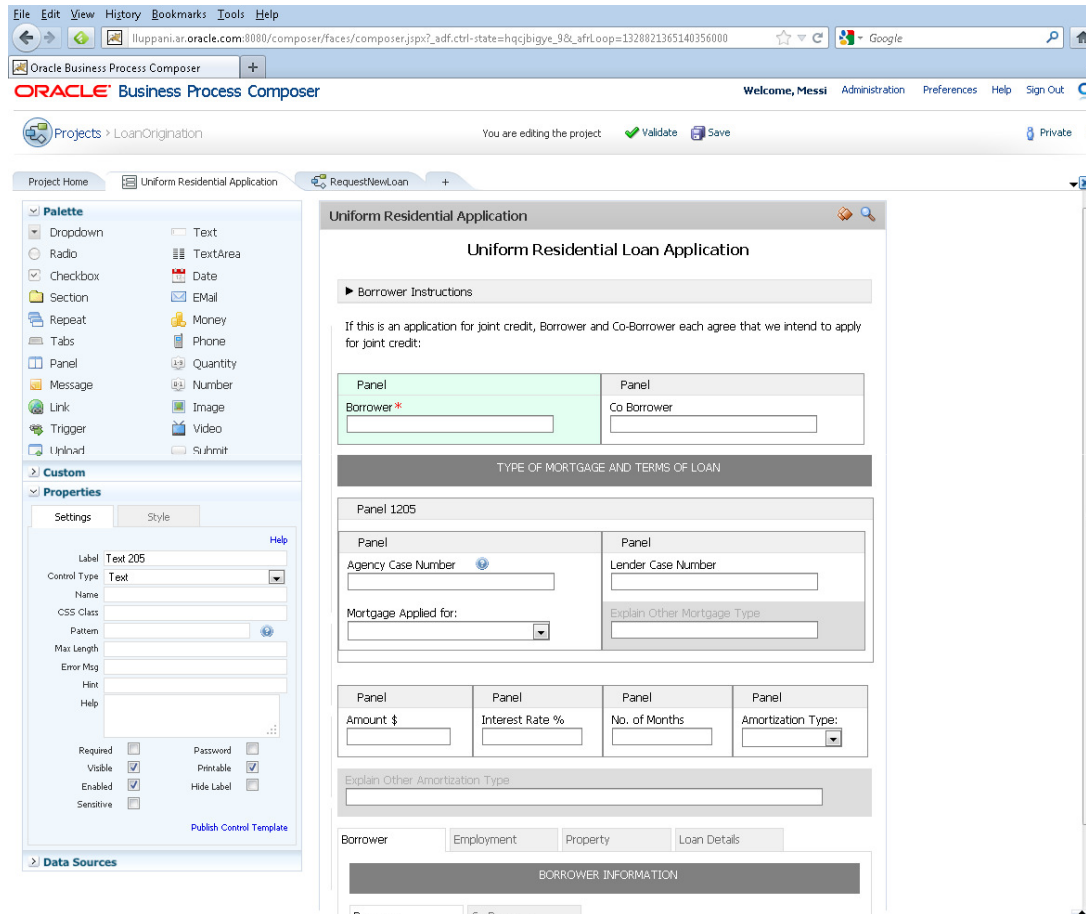
DecisionTable

Show Conflicts Switch Rows to Columns

Conditions	Rules			
	R1	R2	R3	R4
CreditScoringResponseType.currentBalance	<1000.0, [1000.0..5000.0)		[5000.0..10000.0), [10000.0..100000.0)	
CreditScoringResponseType.latePaymentCount	<1, [1..3)	[3..5), >=5	<1, [1..3)	[3..5), >=5
<b>Conflict Resolution</b>				
<b>Actions</b>				
Modify result	<input checked="" type="checkbox"/>	<input checked="" type="checkbox"/>	<input checked="" type="checkbox"/>	<input checked="" type="checkbox"/>
approvedIncrease:int	2000	1000	5000	2000

- Decision Tables, Decision Trees, If-Then
- Tightly integrated with BPM but usable stand alone
- Extensively used within Fusion applications

# Web Form Designer in Process Composer



- Supports both **form-first** and data-first design
- Declarative property driven
- Javascript rules for advanced behavior
- Preview and test

# Process Integrated into Social Interface

The screenshot displays the Oracle Social Network interface, which integrates business process management (BPM) with social networking features. The interface is divided into several sections:

- Navigation:** Includes a top menu with 'Overview', 'BPM Processes', 'Sample BOs', 'Collections', 'BPM Tasks', 'Conversations', 'Documents', and 'People'. A search bar and user profile are also present.
- Recent Activities:** A central feed showing various tasks and processes. Examples include:
  - BPM Task: Review incident Hijacking@San Francisco 2012-02-09T22:05:48.259-08:00 200948** - Process Server - Task Assigned - Review incident Hijacking@San Francisco 2012-02-09T22:05:48.259-08:00 available here (13m ago)
  - BPM Task: Review incident Hijacking@San Francisco 2012-02-09T22:05:48.259-08:00 200946** - Process Server - Task Assigned - Review incident Hijacking@San Francisco 2012-02-09T22:05:48.259-08:00 available here (13m ago)
  - BPM Task: Disposition incident Hijacking@Cupertino 2012-02-06T12:30:12 200940** - Process Server - Task Assigned - Disposition incident Hijacking@Cupertino 2012-02-06T12:30:12. F (26m ago)
  - BPM Process: Hijacking 180013** - Process Server - RTD recommendation received (26m ago)
- Process Detail View:** A detailed view of the 'Hijacking 180013' process, showing:
  - Subject:** Processing Incident P288 Type = Hijacking
  - Requester:** Jane Austen
  - Status:** Started
  - Start Date:** Feb 09, 02012
  - Activity Feed:** A list of events related to the process, such as 'RTD recommendation received', 'Collaboration space created for this case', and 'Process initiated - Processing Incident P288 Type = Hijacking'.
- Sidebars:**
  - Left Sidebar:** Contains navigation options like 'Home', 'Incidents', 'Incident Discovery', 'Incident Analytics', 'Recommendations Analysis', and 'Resource Usage Analysis'.
  - Right Sidebar:** Shows 'Show you' options, 'All Posts', 'Documents', 'Gadgets', 'Members (8)', and 'Referring BPM Tasks'.

# Dynamic Case Management BPM

- BPMN 2.0 and Business Rules enable case management scenarios – dynamically determined tasks based on case context
- Process Composer provides flexibility to change rules and process by business users
- Flexibility to case managers and workers to manage
- Integrated content management
- Concept of Instance (Case) Space
- Rich BAM and Case Analytics





# Dynamic Case Management

## Knowledge Worker Driven Processing

ORACLE Business Process Workspace

Logged in as jstein Home Preferences Help Logout

Tasks Process Workspace Standard Dashboards Case Management

Case: Dobbs, Charles Save Changes

Task: Doctor Exam

Description: Standard activities that comprise the initial doctor exam of a new patient.

Available Activity Flows

Name	Author	Rating
Steinbeck's Protocol	jstein	☆☆☆
Standard Doctor Exam	jcooper	☆☆☆
ER Exam	jausten	☆☆☆
JCooper's Exam Protocol	jcooper	☆☆☆☆☆

Activity Flow: Steinbeck's Protocol

Name	Type	Successors	Duration	Priority	Participants
Discuss History	User Task	Physical Exam	5 minutes		Doctor
Physical Exam	User Task	Take Notes	10 minutes	High	Doctor
Take Notes	User Task	Prescribe	5 minutes	Medium	Doctor
Prescribe	User Task		5 minutes	High	Doctor

Available Activities

- Admitting
- Dismiss
- ER
- Fill out Dismissal Forms
- Reception
- Determine Coverage
- Check Patient Status
- Update History

Tabular BPMN 2.0

Copyright © 2005, 2010, Oracle and/or its affiliates. All rights reserved.

Available Activity Flows for this Task – leverage other's best practices

Define or edit Activity Flow using embedded Composer

Palette of available activities for this Task (governed by case/process model)

# Integrated Content Management

ORACLE Content Server

Home Search New Check In My Profile Help

My Content Server Web Sites Browse Content Content Management Administration Demonstration Links

Search Results Found 7 items

Change View Query Actions XML

Actions	ID	Title	Date	Author	Actions
<input type="checkbox"/>	ECMS_001206	Building Lease	6/23/08	sysadmin	
<input type="checkbox"/>	ECMS_001200	Debris Plan Contract For Acme	6/18/08	sysadmin	
<input type="checkbox"/>	ECMS_001198	Services Agreement	6/18/08	sysadmin	
<input type="checkbox"/>	ECMS_001167	Washington State Promotion Agreement	4/29/08	ann	
<input type="checkbox"/>	ECMS_001168	Services Agreement	4/29/08	ann	
<input type="checkbox"/>	ECM_000605	Mutual NDA	9/10/07	bob	
<input type="checkbox"/>	ECM_000264	Loranda Account Summary	8/9/07	jcooper	

**Add Attachment**

Upload to  Task  Process

\* Attachment Type  Desktop File  URL  Associate UCM document

\* File Name D:\My Documents\Oracle AS Integ

Document Type TaskWorkflow Task Documents

Revision

Release Date 5/31/2011

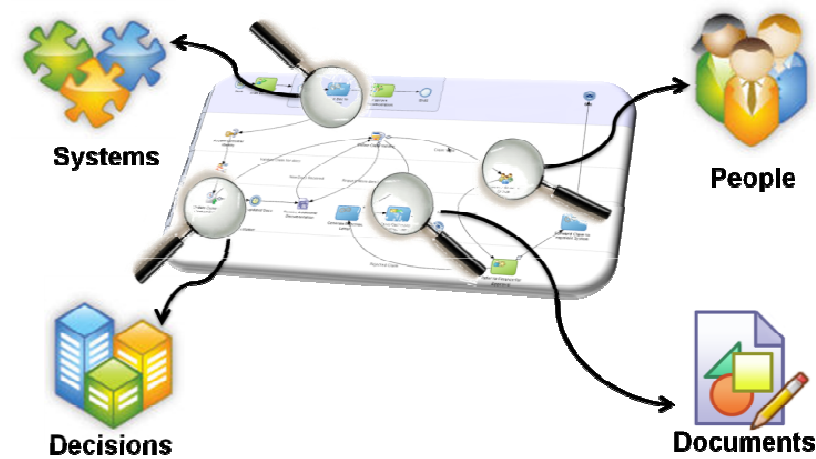
Expiration Date 6/4/2011

Security Group Public

- Tight integration with Content management systems
- Document workflow

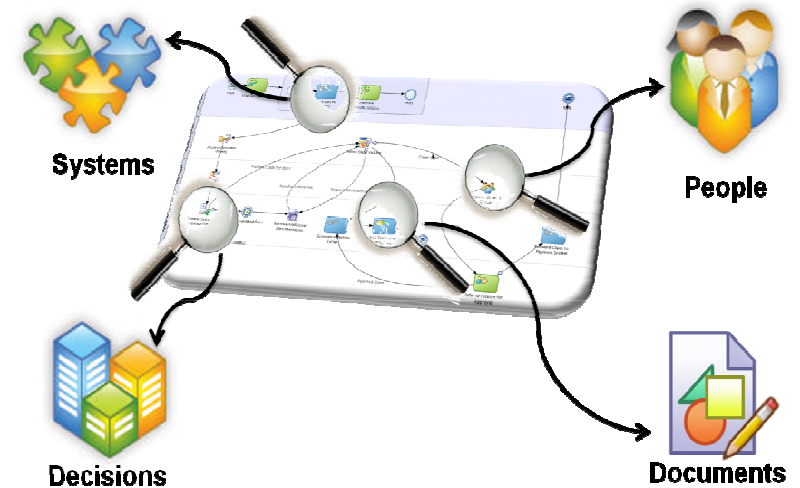
# Oracle Process Accelerators (PA)

- Ready-to-use process solutions built **on top of Oracle BPM**
- **Product-grade, full QA/Test cycle**
- Built with **extensibility** in mind
- **Leveraging services of Oracle Applications** when needed
- Solving both **critical industry processes** and areas that “fall off” IT’s plate
- **Aggregate best practices** and **building blocks** from Oracle experience



# Oracle Process Accelerators Components

- Ready-to-Deploy Process Driven Solutions
- Shared Environment & Task List
- Solution components
  - BPM process models
  - Data models: reusable and extensible
  - Business services, supporting integrations
  - Human Workflow
  - Configurable business rules & patterns
  - User Interaction screens
  - BAM dashboards
  - User/Role management
- Lightweight Documentation – including UPK



# Process Accelerators

## Horizontal solutions

<b>Departmental Processes</b>	<ul style="list-style-type: none"> <li>➤ <i>Travel Request Mgt</i></li> <li>➤ <i>Document Approval</i></li> <li>➤ <i>Complex Document Authoring</i></li> <li>➤ Paid Time Off</li> <li>➤ Internal Services Requisitions</li> </ul>
<b>Invoice Processing</b>	<ul style="list-style-type: none"> <li>• Incoming document validation</li> <li>• Matching</li> <li>• Distribution</li> </ul>
<b>Employee Onboarding</b>	<ul style="list-style-type: none"> <li>• PreOffer, Preboarding, Onboarding</li> <li>• Covers typical HR, plus logistics (Badge, IT Provisioning), &amp; externally sourced activities (Background Check, Drug Test)</li> </ul>
<b>Correspondence Tracking</b>	<ul style="list-style-type: none"> <li>• Incoming, Internal, &amp; Outgoing documents</li> <li>• Apply attributes for access: Parties, Projects, Cases, Incidents</li> <li>• Template driven mass mailings</li> </ul>

# Process Accelerators

## Industry specific

<b>Public Sector</b>	<ul style="list-style-type: none"> <li>➤ <i>Incident Reporting</i></li> <li>➤ Emergency Management</li> <li>➤ Licensing</li> </ul>
<b>Utilities</b>	<ul style="list-style-type: none"> <li>➤ Smart Meter Provisioning</li> <li>➤ Smart Meter Alarm Monitoring</li> </ul>
<b>Retail</b>	<ul style="list-style-type: none"> <li>➤ Promotions Planning &amp; Execution</li> </ul>
<b>Pharma</b>	<ul style="list-style-type: none"> <li>➤ Clinical Trials</li> </ul>

# Roadmap

- Process Accelerators (ongoing and off release cycle)
- Continued enhancement and broadening of business analyst tooling
- Continued enhancement of dynamic case management
- More business friendly business rules
- Significantly richer BAM, unified with CEP and seamlessly integrated with BI
- BPM in the cloud



# Oracle BPM 11g SE Packaging

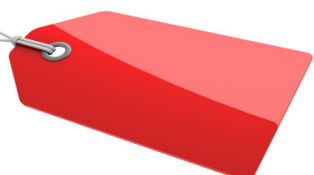
Business Process Management



WebLogic Server (required\*)



- BPM Studio (Limited – no proc. simulation)
- Process Composer
- Process Analytics
- Advanced Workflow
- WebCenter Content (Restricted)
- BAM (Restricted)
- WSM
- Mediator
- Technology Adapters





# Demo: Business Driven Development

## Efficiency

- Model Order Fulfillment process

ORACLE®

# Hardware and Software

ORACLE®

# Engineered to Work Together

ORACLE®